

2017 ANNUAL REPORT TO DONORS



EARTH.
WE'RE ON IT.

Cover: The Rio Cotuhe is a Colombian tributary of the Putumayo River in the Yaguas watershed and lies to the northwest of Peru's Yaguas National Park.



A member of the Field Museum's advance team is lowered from a helicopter during the 2010 rapid inventory in the Yaguas watershed.

CONTENTS

4

Science

14

Public
Engagement

24

Honor Roll



Megacerops coloradensis, the second fossil found by Elmer Riggs (1869–1963), legendary paleontologist during his first year with the Field Museum.



Dear Friends,

We are pleased to share a report on the Field Museum's work in 2017—a year of scientific breakthrough, educational outreach, increased attendance, and philanthropy—for which we are grateful to you.

Your Museum was the beneficiary of philanthropy totaling \$47 million raised in 2017. And for a second year in a row, the Field saw an increase in admissions with 1.5 million people visiting. They came for events, programs, and special exhibitions developed in-house, including *Ancient Mediterranean: Cultures in Contact* and *Specimens: Unlocking the Secrets of Life*, which showcased Field Museum collections and scientific research that is conducted here everyday.

Specimens, in particular, explained why the Museum maintains one of the world's largest natural history collections. The exhibition celebrated the moments when scientists from around the world answered new questions using objects acquired more than a century earlier. And, it proved again that specimens are a snapshot of ecosystems and cultures that are always evolving.

In January 2018, the expertise and patience of the Museum's Keller Science Action Center staff was rewarded when our partners in Peru proclaimed the new Yaguas National Park. For the past 15 years, our conservation biologists and social scientists have worked in this region of the Amazonian rainforest, documenting its biodiversity and advocating for its preservation. In 2017 the Field witnessed and waited for a series of last-minute negotiations as the Peruvian government designated the new national park.

Finally, we celebrate in this *Annual Report to Donors* a transition at the Field Museum. After serving as Board Chair for three years, Connie Keller passed the responsibility to Bill Gantz in March 2018. You can read more about Connie's legacy of leadership at the Field Museum on page 52 of this report.

This report of 2017 accomplishments would not have been possible without your support and active involvement.

With gratitude,

Wilbur H. Gantz III
BOARD CHAIR

Constance T. Keller
BOARD CHAIR (2015–2018)

Richard W. Lariviere, PhD
PRESIDENT AND CEO

An undescribed fish species from the Yaguas River. Five hundred and fifty species of fish—equal to the freshwater fish diversity in the entire United States—are believed to swim in the lakes, streams, and main branch of the Yaguas River.



Yaguas National Park

After dedicating 15 years of hard work to a little-known watershed in northeastern Peru—including two rapid inventories, a dozen books, articles, government documents, and a flurry of last-minute negotiations and technical support in 2017—Keller Science Action Center staff were thrilled by Peru's January 2018 declaration of Yaguas National Park. The new park, which spans an area the size of Yellowstone, grants strict protection to more than half of Peru's 1,000 freshwater fish species and serves as the heart of a large new conservation corridor envisioned by indigenous residents of the Putumayo watershed.

Amazon Basin emerald tree boas (Corallus batesii) are found throughout the Amazon rainforest and the Yaguas watershed.



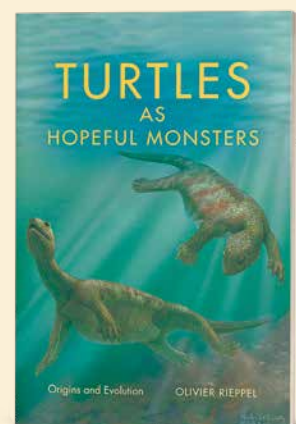


Secoya children in a canoe
on the Yubineto river in
remote northern Peru.



Turtles as Hopeful Monsters

Here they are, still with us, boxed up in shells, prehistoric creatures that both predated and outlived the dinosaurs. Despite their highly specialized body plan, turtles show a surprising potential for evolutionary diversification, with 311 living species that conquered a great variety of habitats. Where do turtles come from, and how did their unique anatomy and bodily functions evolve? These are questions addressed in *Turtles as Hopeful Monsters*, a new book by Rowe Family Curator of Evolutionary Biology Olivier Rieppel, PhD, published by Indiana University Press.





Biodiversity of Mountains

It is a popular hypothesis: As mountains were created by tectonic shifts, habitats expanded, leading to the development of new species from resident ancestors. Research by Associate Curator of Botany Richard Ree, PhD, yielded the first quantitative evidence of this hypothesis for plants in the Hengduan Mountains, a temperate biodiversity hotspot in Southwest China. Ree studied evolutionary relationships of resident species and estimated when, where, and how their ancestors split to form new lineages. The data clearly shows a dramatic increase in the rate of species formation in the Hengduan Mountains during the same geological period, the last eight million years or so, in which the mountains were formed.



In 2017, Field Museum scientists conducted fieldwork in diverse locations around the world, including southern China, the Philippines, and the Solomon Islands.

Archaeology and Globalization

Globalization is often considered a phenomenon exclusive to the modern, Western world. Yet populations from across the earth have been interconnected for millennia. The Museum's Boone Research Scientist Lisa C. Niziolek, PhD, and Macarthur Curator of Mesoamerican Anthropology Gary M. Feinman, PhD, presented a new paper on this topic, along with research scientist Laure Dussubieux, PhD, and colleague Amanda Respass at the 82nd Annual Meeting of the Society for American Archaeology. Titled "Globalization in Southeast Asia's Early Age of Commerce and the Contributions of Maritime Archaeology," the paper synthesizes their ongoing research on the Museum's Java Sea Shipwreck collection and its relevance for illuminating ancient broad-scale human connectivity.

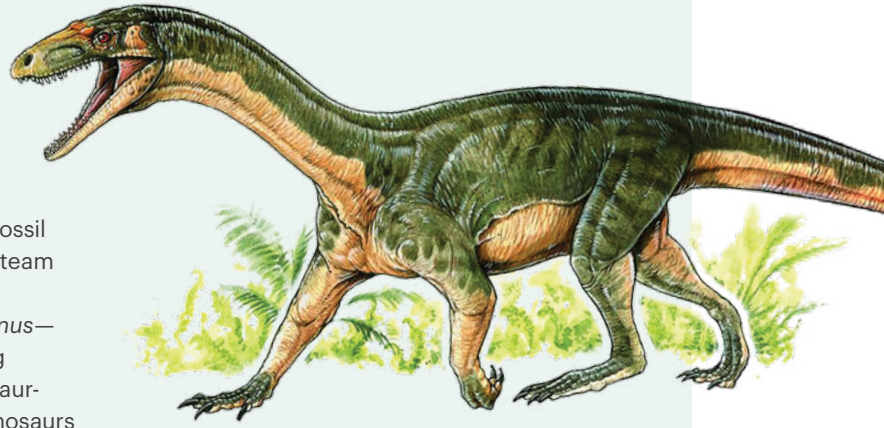
SCIENCE



Left: A metal altar leg found in the Java Sea Shipwreck.

Dinosaur Cousins

In a paper published in *Nature*, Associate Curator of Fossil Mammals Ken Angielczyk, PhD, and an international team of university scientists described the earliest known dinosaur relative. Officially named *Teleocrater rhadinus*—meaning “slender complete basin”—this six-foot-long species was surprisingly more crocodilian than dinosaur-like, resembling the monitor lizards alive today. All dinosaurs are archosaurs, a group that contains dinos, birds, pterosaurs (“flying reptiles”), and crocodilians. About 250 million years ago, the archosaurs split into two groups: a bird-like group that evolved into dinosaurs, birds, and pterosaurs, and a crocodile-like group. While the newly-discovered *Teleocrater rhadinus* is the earliest member of the bird side of the family, the authors say it is not a direct ancestor of dinosaurs, but it is the oldest known dinosaur cousin.



An artist's rendering of the species *Teleocrater rhadinus*, an ancient relative of dinosaurs and birds.



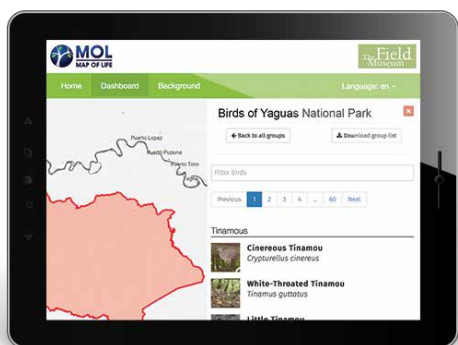
Digitization of Museum Collections

Robert A. Pritzker Director of Integrative Research Corrie Moreau, PhD, had a new paper published in *Nature, Ecology and Evolution* this year titled: “Digitization of museum collections holds the potential to enhance researcher diversity.” Co-authored by Josh Drew, PhD, and Melanie Stiassny, PhD, of the American Museum of Natural History, the paper highlights how the advent of digitization allows open access to images and specimen data. With open access, communities, especially in the Southern Hemisphere, will have access to the previously out-of-reach collections held mostly in the Global North. This will, in turn, promote researcher diversity and continued learning, both formally by professionals and informally by citizens and educators.

Giant Rats

In September, Negaunee Postdoctoral Research Fellow Tyrone Lavery, PhD, and colleague, Hikuna Judge, published a description of a new Solomon Islands rodent (*Uromys vika*). The Associated Press’ release was featured in over 1,000 news outlets around the world, toppling SUE as the most popular news about the Field Museum. It was clear from the articles that people were fascinated with how this species was found; a scientist and indigenous landowners worked together with equal determination to record an incredibly rare mammal in a remote part of the world. It demonstrated the public’s appetite for news about the natural world and highlighted exceptional steps taken by Field Museum scientists to find new species.





Biodiversity Dashboards for Peru, Ecuador, and Colombia

The Conservation Tools team, which has curated three major online identification tools since 1999, launched a brand new one in 2017. Built for land managers in diverse countries where basic information on plant and animal occurrence is scarce, these dashboards use Field Museum collections data to provide species lists and information on conservation action for nearly 1,000 parks. The project, a collaboration with Yale University's Map of Life team and funded by the John D. and Catherine T. MacArthur Foundation, is currently testing the first prototype with the park services in all three countries.

Calumet National Heritage Area

Since its founding, Field Museum scientists have documented the biological and cultural richness of the industrial Calumet region that lies at the southern end of Lake Michigan. The area stretches from the Pullman National Monument to the Indiana Dunes. Working with many partners and engaging communities throughout this landscape, Keller Science Action Center staff significantly advanced a multi-year process with the formal submission of a critical book-length document to the National Park Service in 2017. The document demonstrates the area's national significance and lays out the feasibility of organizing and administering a new national heritage area.

The feasibility study was generously supported by ArcelorMittal.



Ancient Agricultural Practices

Associate Curator Ryan Williams, PhD, published an article in the November 2017 issue of the *Journal of Environmental Management* with Geologist Ana Cristina Londono, PhD, of Lindenwood University and Engineer Megan Hart, PhD, of the University of Missouri–Kansas City entitled “A change in landscape: Lessons learned from abandonment of ancient Wari agricultural terraces in Southern Peru.” Based on LIDAR survey work they conducted in 2013 in remnant terrace systems in the Andes, the authors argue the archaeological study of ancient terrace systems teaches us that ancient land management practices may be superior to those used today. They further argue that ongoing climate change is impacting agrarian productivity in dryland regions, which cover 40 percent of the earth's land surface, and that rehabilitation of highland terrace systems to full agricultural productivity may be necessary under the overriding shifts in climate towards intense aridity in these regions.

Right: Associate Curator Ryan Williams, PhD, at the site of Cerro Baul in Southern Peru.





Live Monarch
Butterfly release just
north of the Museum's
East Doors.



Monarch Conservation

The Field Museum's Keller Science Action Center, with support from the US Fish and Wildlife Service, developed tools to assist urban communities taking action to save the Monarch butterfly. The tools, found at fieldmuseum.org/monarchs, include an Urban Conservation Guidebook, which uses a combined social-ecological approach to engage citizens and decision makers with strategic pollinator habitat planning. This effort elevated the Field Museum's role as an expert in urban pollinator conservation design and launched the team into partnerships at the local, regional, national, and international scale aimed at reducing the extinction risk for the Monarch butterfly.

Chicago Community Climate Forum

In December, along with more than 70 civic and environmental organizations, the Field Museum hosted the Chicago Community Climate Forum to feature Chicago stories about innovative climate solutions and celebrate the vision of vibrant communities made more resilient through climate action. Nearly 1,500 community leaders and engaged residents attended the event in Stanley Field Hall. The program featured keynote speaker Mustafa Santiago Ali, former chief of the Environmental Justice Office of the Environmental Protection Agency and now a senior vice president for Hip Hop Caucus. The evening culminated with the unveiling of the *Chicago Agreement on Climate and Community* which outlines a set of principles and commitments to embrace climate solutions with a platform for community members and local organizations to contribute to climate action. The event's success underscored the unique role the Field Museum plays in convening and elevating diverse voices, and in focusing on solutions.





More than 70 pieces were treated for the *Ancient Mediterranean: Cultures in Contact* exhibition.

Additions to Gantz Family Collection Center Staff in 2017



STEPHANIE HORNBECK
Head of Conservation

Stephanie Hornbeck joined the Field staff in February after serving as Director of Caryatid Conservation Services, Inc.—her Miami-based private practice in object and sculpture conservation. She served as Chief Conservator for the Smithsonian Institution's Haiti Cultural Recovery Project after the 2010 earthquake and was awarded the Smithsonian Secretary's Gold Medal for Exceptional Service.



ADAM FERGUSON, PHD
Negaunee Collections Manager of Mammals

Adam Ferguson comes to the Museum from a Fulbright Postdoctoral Fellowship working with wildlife management students at Maasai Mara University in Kenya. He is an evolutionary ecologist with a particular interest in the geographic distribution and evolutionary history of small-to-medium-sized carnivores. Ferguson received a PhD in biology from Texas Tech University.



STACY DRAKE, PHD
Bioarchaeologist

Stacy Drake joined the Museum in March to participate in an MLS-funded project to improve documentation and care of North American human remains within the Museum's collection. She earned her PhD from the University of Texas at Austin, researching prehistoric burial patterns of ancient Maya communities. Prior to the Field, Drake worked at the Texas Archeological Research Laboratory in Austin.

Conservation Projects

Conservators working in the Field Museum's Anthropology Department were fully involved in documenting and treating objects to prepare for installation in *Ancient Mediterranean: Cultures in Contact*. Conservator Debbie Linn served as the conservation project liaison. The most complicated treatment involved the 1st-century-AD Roman wall painting fragment (fresco technique) from Boscoreale, Italy. In consultation with the Field's conservators, contract conservators from Litas Liparini Restoration Studio stabilized numerous cracks and aesthetically integrated the damage with painted fills, allowing renewed appreciation of the original design motifs depicting an architectural interior.

Traveling objects require specialized packing and shipment to protect them in transit. Conservator JP Brown worked with a Field Museum team to pack, unpack, assess condition, and install *Mummies: Images of the Afterlife* at the American Museum of Natural History (New York) in February 2017. This was the last of four venues for the Field's traveling exhibition.

Head of Conservation Stephanie Hornbeck planned for conservation work on the upcoming multi-year renovation of the *Native North American Hall*. She served as co-principal investigator with Curator Alaka Wali, PhD, for grant proposals to support conservation and community collaboration efforts for the new hall. The grants will supplement support of salaries for a dedicated conservation project team and facilitate Native consultations related to care and storage.



Kwakiutl mask on display in the Alsdorf Halls of Northwest Coast and Arctic Peoples.



JULIA KENNEDY

Collections Assistant for Pacific Anthropology

Julia Kennedy has been a volunteer in Anthropology for more than three years and worked in a term position with the Philippines Collection. She has undertaken collections and database work at Watkins Mill, a Missouri historic site and museum, and has participated in archaeological field work for the Iklaina Archaeological Project in Greece.



JACKIE POZZA

Collections Assistant for North American Anthropology

Jackie Pozza received her MA in Anthropology from the University of Wisconsin-Milwaukee in 2016. Her thesis focused on Oneota copper material from southeastern Wisconsin. She interned at the Missouri History Museum and National Railroad Museum and served as a Collections Management Associate at the Wisconsin Historical Society.



Transcription Party

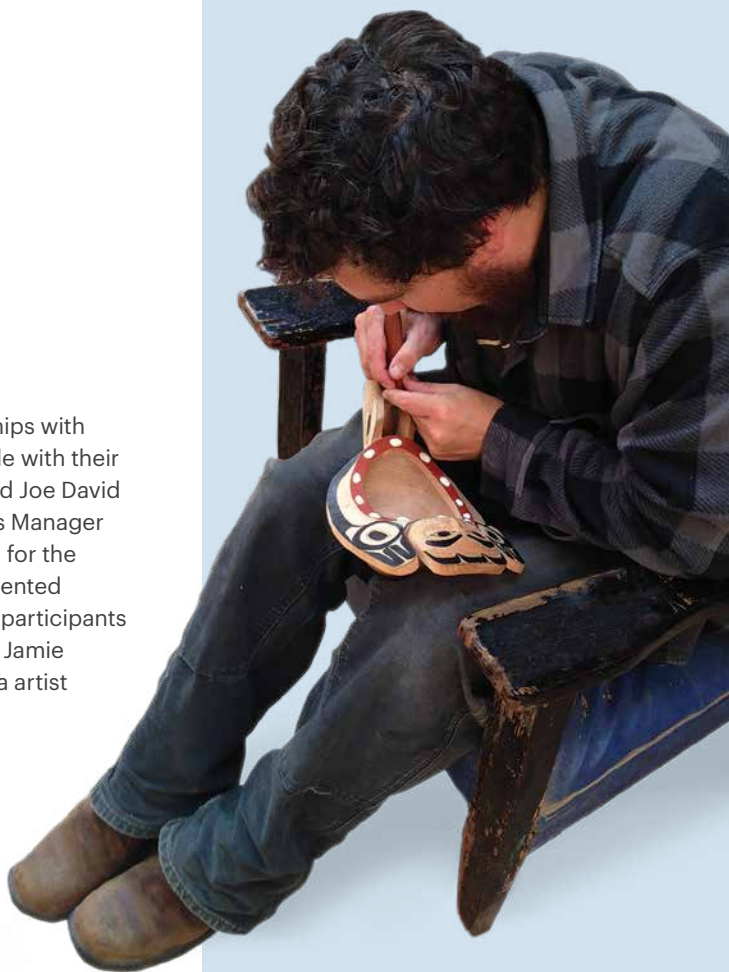
From October 19 to 22, the Gantz Family Collections Center invited members of the public, including college and high school students, to participate in a “transcription party.” This was in conjunction with the Worldwide Engagement for Digitizing Biocollections or WeDigBio, a global event that brings participants online and onsite in digitizing natural history collections. Marking its third year of participation in WeDigBio, the Museum was one of the most significant on-site event hosts, globally, with support from more than 140 grassroots scientists in the Chicago region and beyond. Participants included the general public, Museum docents, and students. The collaborative effort was coordinated by McCarter Collections Manager and Head of Botanical Collections Matt von Konrat, PhD, Collections Assistant Yarency Rodriguez, and botanical collections volunteer Joann Martinec. Over 300 volunteers gathered throughout 2017 to help transcribe vital information from scientific specimens and objects as well as hands-on curation activities.



Connecting First Nations to Field Museum Collections

In 2017, Anthropology Collections staff continued to build relationships with artists and communities on the Northwest Coast and connect people with their cultural heritage. First Nations artists Marika Swan (Tla-o-qui-aht) and Joe David (Nuu-chah-nulth) visited the Museum in June and invited Collections Manager Jamie Lewis to their community in Tofino, British Columbia, Canada, for the eighth annual Carving on the Edge Festival. At the event, Jamie presented photos and information about the Tla-o-qui-aht items at the Field to participants and spoke with elders about how the Museum cares for collections. Jamie also had the opportunity to visit Haida Gwaii and connect with Haida artist Jaalen Edenshaw, who visited the Museum in 2016. During this visit, Jamie purchased a carved raven bowl from Jaalen for the Museum’s permanent collection. Continued outreach from the Field to indigenous communities is essential for the sustainability of the Museum’s collections and best care practices.

Right: Haida artist Jaalen Edenshaw carves a raven bowl, which was later purchased by Collections Manager Jamie Lewis.





Bill Simpson, Head of Geological Collections and McCarter Collections Manager, peruses fossil specimens inside the Gantz Family Collections Center.

Collections Club

The Collections Club was created in 2017 after volunteers expressed a strong interest following their participation in the 2016 WeDigBio public transcription event. The Collections Club met quarterly with about 50 to 60 active members of broad backgrounds. The major goals of the Club are to:

- **Harness the enthusiasm generated by the WeDigBio events,**
- **Deepen the connection between scientific collections and the general public,**
- **Increase engagement through participatory science, and**
- **Improve and enhance physical specimens and associated data.**

Participants generated data from more than 6,000 objects and specimens and re-packaged over 1,500 bryophyte specimens (mosses and liverworts) collected by Rudolf M. Schuster, PhD, who was previously a Research Fellow at the Field before his death in 2012. The volunteers unwrapped specimens from newspapers—some dating back to the 1960s—and placed them in archival packets. They also transcribed scientific label data from 3,500 bryophyte and fern specimens from around the world. Over 500 exhibition labels were digitally scanned for the anthropological collections. In addition, members examined 35mm photographic slides from the insect collection, which were then rehoused and prepared for cataloging. Dozens of pages from field notebooks of historical expeditions were also examined and transcribed. None of this work could have been achieved without the support and time of our grassroots scientists.



Collections Club participants generated data from more than 6,000 objects and specimens.



Volunteers examine and transcribe pages from field notebooks kept in the Museum's archives.

PUBLIC ENGAGEMENT



Coffin lid for a Roman Egyptian woman featured in *Ancient Mediterranean Cultures in Contact and Mummies*.

Ancient Mediterranean: Cultures in Contact

In late October, the Museum opened its newest special exhibition, *Ancient Mediterranean: Cultures in Contact*, which showcased 100 rarely seen artifacts from the Museum's Egyptian, Roman, Greek, and Etruscan collections. Each of these objects, such as an Etruscan necklace decorated with Egyptian scarabs, told a small part of a larger story of ancient immigration, assimilation, and connection. The exhibition was especially noteworthy for the way it revealed parallels between the classical world and the interconnectedness of our modern society.



Etruscan black ceramic amphora with designs of seated goddess receiving gifts.



The Peregrine Returns: The Art and Architecture of an Urban Raptor Recovery

The Museum exhibited the story of Assistant Collections Manager Mary Hennen's book *The Peregrine Returns* through the artwork of Artist-in-Residence Peggy Macnamara. The book described the Peregrine Falcon's devastating decline and recovery in the state of Illinois. Using her Chicago Peregrine Program as a case study, Hennen explained how the urban landscape played an essential role in enabling Peregrines to return to the wild. Along with Macnamara's illustrations, the exhibition also displayed a slideshow of photographs by Stephanie Ware, which documented Chicago's Peregrine Falcons and eggs collected before, during, and after the DDT crisis—an environmental catastrophe that caused a thinning of the falcons' eggshells.



Cultures in Contact showcased 100 rarely seen artifacts from the Museum's Egyptian, Roman, Greek, and Etruscan collections.



Animatronic
Parasauralophus
featured in *Jurassic
World: The Exhibition*.

Jurassic World: The Exhibition

Inside a weather-protected tent, the Field Museum hosted *Jurassic World: The Exhibition*. Visitors came face-to-face with dinosaur animatronics developed by Imagine Exhibitions based on the blockbuster film, *Jurassic World*. This traveling exhibition recreated the iconic dinosaur-filled island from the film, and allowed visitors to form real connections with the Museum's famous fossil collections. In addition to animatronics, visitors interacted with hands-on digital activities, such as a *Velociraptor* training encounter.

Official Travel Partner: United Airlines

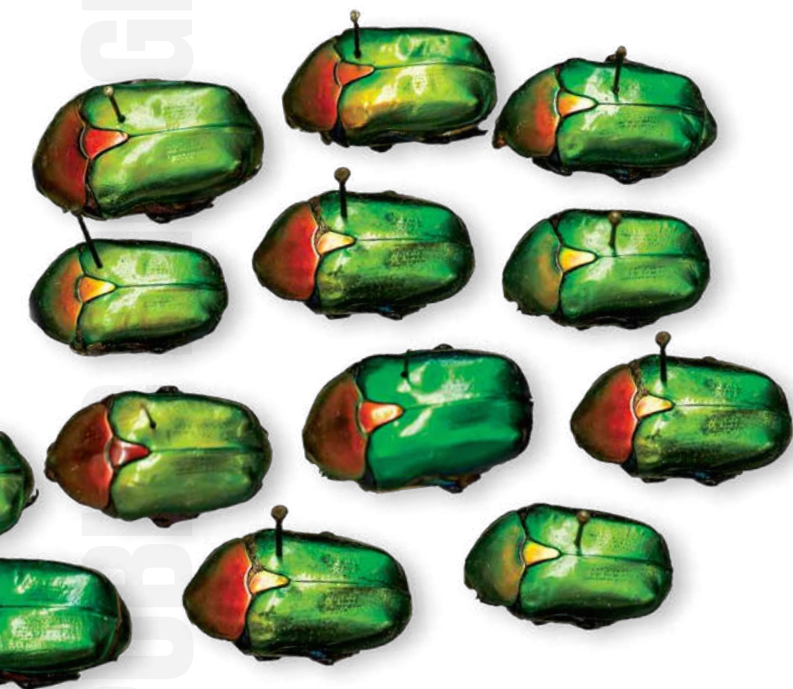
Jurassic World is a trademark and copyright of Universal Studios and Amblin Entertainment, Inc. Licensed by Universal Studios. All rights reserved.



Specimens

Opening in March, *Specimens: Unlocking the Secrets of Life*, was a continuation of the popular "Opening the Vaults" exhibition series, which included *Mummies* (2012) and *Wonders of the 1893 World's Fair* (2013). This series puts on display some of the nearly 40 million objects held in the Museum's collections. An active research institution, the Field employs scientists who make new discoveries based on its artifacts and specimens—many of which were acquired a hundred years ago. For *Specimens*, the exhibitions team and Museum staff hand-picked interesting, significant, or enigmatic specimens that allowed visitors to discover and interact with the Field's extensive research history.

Major Sponsor: Integrated DNA Technologies



Left: These scarab beetles are part of the Museum's collection of 40 million objects and specimens.



Bushman Care and Move

In 2017, one of the Field Museum's most iconic specimens, Bushman the Gorilla, was cleaned and moved to the East Entrance on the Ground Floor. Bushman lived in the Lincoln Park Zoo from August 15, 1930, until his death on January 1, 1951. He was then processed for taxidermy by Leon Walters, Field Museum taxidermy artist from 1911 to 1954. Bushman's new location at the East Entrance allows school children arriving at the Museum for field trips to engage directly with the specimen through new digital labels and discover his importance to Chicago.



The Field Museum holds the largest meteorite collection of any private institution.

Meteorites

A new permanent exhibition opened in January in the *Grainger Gallery* near the *Malott Hall of Jades*. It features meteorites from the Field Museum's collection, which began with 170 specimens purchased by Marshall Field I following the 1893 World's Columbian Exposition. Now holding the largest collection of meteorites of any private institution, the Field shares its most rare and interesting specimens with visitors, including pieces from the Russian Chelyabinsk air blast in 2013. The exhibition also highlights four fossil meteorites and the secrets they can reveal about our universe.



Beyond Bollywood: Indian Americans Shape the Nation

A traveling exhibition from the Smithsonian Institution, *Beyond Bollywood* was at the Field Museum from July 29, 2017, to January 7, 2018. The exhibition explored the heritage, daily experience, and diverse contributions of Indian immigrants and Indian-Americans in the United States from the 1700s to the present. The Field collaborated with the Indo-American Heritage Museum to expand the exhibition by the inclusion of twenty objects, which highlighted the civic, economic, scientific, and artistic contributions of Chicagoland's Indian-American community. Among these objects, the Museum displayed the combat boots worn by US Army Sergeant Uday Singh, who died in Iraq in 2003, and the Nobel Prize awarded to University of Chicago astrophysicist Subrahmanyan Chandrasekhar.

This exhibition is generously supported by The Chicago Community Trust.



March for Science

On Earth Day, April 22, the Field Museum led the world's largest March for Science. A crowd of 40,000 gathered in support of scientific research and advocacy. The Field Museum (the only Chicago museum to participate) made a strong showing—about 700 staff, volunteers, donors, and their families marched with the Museum, wearing bright green shirts. Emily Graslie, the Museum's chief curiosity correspondent, was the keynote speaker at the rally before the march from Grant Park to the Museum Campus. Afterward, the Field and other scientific organizations held an expo providing marchers with opportunities to further engage with and support science.

Left: Participants in the 2017 March of Science took a creative approach to voicing their opinions.



Top: Trustee David D. Hiller speaks in the Native North American Hall at the 10th Anniversary dinner for The Ancient Americas.

Right: Osage, Kaw, Cheyenne River Lakota Sioux artist Chris Pappan and his wife, Debra, and daughter, Ji Hae, attended the 10th Anniversary Dinner of The Ancient Americas. Pappan's artwork is featured in the Native North American Hall.

Ancient Americas 10th Anniversary

In March, the Field Museum celebrated the tenth anniversary of the *Robert R. McCormick Halls of the Ancient Americas*. The exhibition, opened in 2007, tells the epic story of 13,000 years of human ingenuity and achievement in the Western Hemisphere before the arrival of European explorers. In honor of its anniversary, a number of exhibition supporters, including Museum Trustee David D. Hiller, president of the Robert R. McCormick Foundation, joined Museum leaders for a dinner on the evening of March 30. As part of the evening's celebration, the Field shared early plans for finishing the story begun with *The Ancient Americas* through a new permanent exhibition about Native North Americans.



"Facts are always welcome here, and so are you."

Day of Facts

In response to the era of "fake news," the Field Museum stood up for facts and science in 2017. The Field joined museums, libraries, and cultural institutions around the world for the social media campaign #DayofFacts on February 17. Hundreds of Field Museum staff participated in a video that declared, "Facts are always welcome here, and so are you." The video went viral, becoming the Museum's most wide-reaching social media post at the time and was featured in the *Washington Post* and the *Chicago Sun-Times*. It was later screened at the national March for Science in Washington, D.C.



Right: Kevin Willer and Beth Schmidt, Field Associates President (2017), speak at the Museum's Young Professionals Leadership Summit.



Young Professionals Leadership Summit

On November 11, the Field Associates, in partnership with the All A-Board Alliance, hosted the inaugural Auxiliary Board Leadership Summit. The event was a highly successful and unique conference, which attracted 125 Young Professional Auxiliary Board volunteer leaders and staff liaisons from 65 Chicago area organizations. This summit cemented the Field Associates' role as thought-leaders in Chicago's community. In addition to attending breakout sessions focused on strength-based leadership, the value of diversity, and the alignment of auxiliary and governing boards, guests heard from keynote speaker Kevin Willer of Chicago Ventures about the intersection of philanthropy and the entrepreneurial spirit.



Field In The Burbs

The first of its kind, the Field's *In The Burbs* program "Does Nature Need Cities?" took place on August 26 at the Oak Park Conservatory. It was designed to bring the Museum's work to our communities of members and donors. Attendees examined specimens and heard from Museum scientists Mark Bouman, PhD, and Abigail Derby Lewis, PhD. Their talk discussed ways to address environmental changes in Oak Park and across the region, as well as new efforts being piloted in Chicago to create pollinator habitats and recover species, such as the Monarch butterfly.



Purple coneflower
(*echinacea purpurea*)



Women in Science 2017

On April 25, 2017, the Women's Board of the Field Museum held its annual Women in Science Luncheon with a keynote address by Ilene Gordon, Chairman, President, and CEO of Ingredion, followed by a moderated conversation with Ambassador Fay Hartog-Levin (Ret.). The event, co-chaired by Field Museum Women's Board Members Donna Greenberg and Deanne McLean, drew nearly 400 corporate, civic and philanthropic leaders from throughout Chicago and the region. Surrounding the luncheon and program, the Museum also welcomed 40 young women from Chicago Public Schools for a day of hands-on programming and a chance to network with women in STEM careers. The event raised more than \$225,000 in support of science internships and fellowships for young women at the Field Museum.

The annual Women in Science Luncheon also funds the activities of the Field Museum Women in Science group, which this past year hosted a total of six guest speakers at their monthly meetings in addition to their other events. Among these was Meg Malone, PhD Candidate at the University of Illinois at Chicago who spoke on the eco-evolutionary feedbacks of coral reefs and fishes, and, in February, Bridget Coughlin, PhD, president and of the Shedd Aquarium, spoke on sharks, plastic, and sustainability. Adele Simmons, PhD, president of Global Philanthropy Partnership, and Barbara Risman, PhD, of the University of Illinois at Chicago both spoke on women's and gender issues of the coming era. And in November, Brenna Argall, PhD, of Northwestern University gave a lecture on human anatomy and robotics. The Women in Science Yearly Symposium was held on September 20 and featured Maureen Donnelly, PhD, of Florida International University who spoke on the conservation of Neotropical amphibians.



Above: Fay Hartog-Levin and Ilene Gordon speak at the Women in Science Luncheon.



Top and Right: Chicago Public Schools students hear from 2017 Women in Science Luncheon speaker Ilene Gordon and participate in hands-on butterfly pinning activity following the lecture.

First Anniversary of the Grainger Science Hub

In 2017, nearly 300,000 visitors came through the *Grainger Science Hub* and engaged with its Discovery Squad carts. Guided by Field Museum educators and volunteers, visitors engaged with the Museum's collections and research to learn about topics from the oldest minerals ever found on Earth to the Field's work with Peregrine Falcons. The *Grainger Science Hub* also hosted 73 Meet-a-Scientist events, five live Brain Scoop events, and four live Meet-a-Scientist Skype events from the field. Scientists also joined the Hub Team to celebrate National Fossil Day on October 11, the solar eclipse that took place on August 21, and exhibition openings with items from the collections.



The Grainger Science Hub hosted 73 Meet-a-Scientist events, five live Brain Scoop events, and four live Meet-a-Scientist Skype events.



Design Challenges

The Industrial Revolution is a familiar term, but the growing Biomimetic Revolution may be less so. Nature has been engineering through the process of evolution for millions of years, and many of these amazing designs can provide solutions to human problems. Biomimicry Design Stations introduce field trip students to the world of engineering by gaining inspiration from the Museum's collection of natural specimens. Participants are presented with specimens from nature and the man-made creations that were inspired by those objects. They find answers to how leeches help get clothes cleaner, spider webs can save birds' lives, and corals can help us create sidewalks out of pollution. Inspired by these intriguing inventions, students travel the galleries with mini-dry erase boards and markers to find amazing "creature features" and draft their own inventions inspired by those characteristics. The board presentations allow students to share their findings with their peers. They often finish the station wondering what other intriguing features they might see in the museum and what function those structures serve. Whether students are building a better bug trap to help our scientists collect insects or discovering nature's amazing solutions to problems in their own lives, these Biomimicry Design Stations encourage learners to see new relevance in the Field Museum's collections and research by introducing them to the science of engineering.



A Field Museum volunteer leads a design challenge in the Ronald and Christina Gidwitz Hall of Birds.

School Learning Experiences are generously supported by ITW.



National Recognition for Field For All

The American Alliance of Museums honored the Field Museum for its Field For All program, a new suite of programs, events, and resources originating from the *Crown Family PlayLab*. Designed to make all families feel welcomed at the Museum, Field For All includes Sensory Saturdays and Accessibility Days, which are tailored to meet the needs of guests with a variety of disabilities. Field For All also offers five unique tours of the Museum for guests with special needs to explore outside the *PlayLab*. All programming takes place when the *PlayLab* is closed, and a new app has been developed to help visitors prepare for their specially created visits.



curioCITY

curioCITY is a career exploration event run by teens for teens. Originally designed as an introductory program to the Field Museum for youth, the event introduces participants to other teens involved in Museum programming. Members of the Museum's Youth Council plan each curioCITY event by choosing topics and presenters. Youth Council members also moderate a conversation between Field Museum scientists and guest speakers, exploring the pathways that led the speakers to their respective careers. Featured guests included Hebru Brantley (artist), Aravind Athiviraham (sports medicine doctor), and Suzanne Smyth (fire investigator). In 2017, more than 90 youth from around the city of Chicago participated in a curioCITY event.

The Back Room

In conjunction with *Specimens: Unlocking the Secrets of Life*, the Field partnered with Johalla Projects Land and Sea Department and the Chicago Athletic Association to bring a new experience to Chicago. The Back Room—a pop-up bar located in the former pool of the CAA—was designed by Johalla Projects to evoke a vintage scientist's office and included specimens from the Museum. Field Museum scientists presented a workshop, demo, or discussion every night the bar was open through March 25.





HONOR ROLL

Board of Trustees

EXECUTIVE COMMITTEE

Wilbur H. Gantz III
Board Chair

Richard W. Lariviere
President and CEO

Constance T. Keller
Chair Emeritus

John L. Bucksbaum
Vice Chair, Facilities and Administrative Services

John A. Canning, Jr.
Vice Chair, Learning

Dr. Richard A. Chaifetz
Vice Chair, Retirement and Benefits

Richard W. Colburn
At Large

Marsha A. Cruzan
Vice Chair, Development

James S. Frank
Vice Chair, Science Action

Marshall B. Front
Vice Chair, Investment

Judy Greffin
Vice Chair, Finance

Caryn L. Harris
At Large

David D. Hiller
Vice Chair, Integrative Research

William C. Kunkler III
Vice Chair, Governance

Margaret B. MacLean
Vice Chair, Collections

Bobby Mehta
Vice Chair, Audit

Michael O'Grady
At Large

John W. Rowe
Vice Chair, Government Relations

Jessica P. Sarowitz
At Large

Matthew K. Simon
Secretary

Dawn L. Solomon
Vice Chair, Exhibitions

Mark Tebbe
Vice Chair, Technology

W. Rockwell Wirtz
Vice Chair, Marketing

TRUSTEES

Susan M. Benton

Judson Bergman

Howard B. Bernick

Amy E. Best

Norman R. Bobins

Gregory C. Case

Eduardo F. Conrado

Kenneth W. Coquillette

David Cotton

Mark J. Cozzi

Sir Peter Crane FRS

Kermit R. Crawford

Robert W. Crawford, Jr.

Oscar A. David

Louis T. Delgado

Roger K. Deromedi

Daniel A. Diermeier

Richard Elden^D

Charles M. Falcone

Jamee C. Field Kane

Marshall Field V

Michael E. Flannery

Ronald J. Gidwitz

Robert H. Gordon

Jack M. Greenberg

Kelly J. Grier

Lewis S. Gruber



EVOLVE

At EVOLVE, the Field Associates' annual fundraiser, Museum scientists shared their research with guests throughout the night. The event filled Stanley Field Hall and the Hall of Asian Mammals with 325 guests and generated nearly \$50,000 in revenue. Attendees sampled hors d'oeuvres contributed by local restaurants, enjoyed specialty cocktails, live music, dance performances, and more. Held on October 22, the evening was chaired by Matt Berding and Lindsey Soukup.

Adnaan Hamid
Todd Kaplan
Michael L. Keiser
Jeffrey B. Keller
Richard L. Keyser
Randolph Kurtz
Diane von Schlegell Levy
W. James McNerney, Jr.
Jack Molloy
Clare M. Muñana
Madhavan K. Nayar
Patricia Marroquin Norby
Neil S. Novich
Christopher A. O'Herlihy
James J. O'Connor, Jr.
Asutosh Padhi
Aurie A. Pennick
John F. Podjasek III
Peter B. Pond
Richard S. Price
John Rau

Douglas P. Regan
Thomas S. Ricketts
Michael J. Sacks
Nydia S. Searle
Michael E. Severino, MD
Jai Shekhawat
Alejandro P. Silva
Adele S. Simmons
Thomas S. Souleles
Mark R. Walter
Everett S. Ward
Laura S. Washington
Melvin D. Williams
Patrick Wood-Prince
Jason Wortendyke

EX-OFFICIO TRUSTEES

Donna L. Greenberg
Susan Clark McBride
Jesse H. Ruiz, Esq.
Ryan S. Ruskin

Beth A. Schmidt
Liz D. Sharp
Kevin P. Stineman
Margaret Stineman
Ryan VanHolsbeke

NATIONAL TRUSTEES

Gail K. Boudreaux
Jean-Claude Brizard
Jeffrey T. Foland
Leo F. Mullin
David C. Parry
Michael Tang

LIFE TRUSTEES

Mrs. T. Stanton Armour
Judith S. Block
Willard L. Boyd
Worley H. Clark, Jr.
James W. Compton
James A. Delaney III

Thomas E. Donnelley II
Michael W. Ferro, Jr.
Wayne E. Hedien
Pamela K. Hull
Richard M. Jones
William H. Kurtis
Robert B. Loveman
Scott P. Marks, Jr.
John W. McCarter, Jr.
James J. O'Connor, Sr.
David M. Tolmie
Robert L. Wesley
Miles D. White
William J. White

Founders' Council

The Founders' Council is the Field Museum's premier annual giving donor society. Members contribute \$2,500 or more to support every aspect of the Museum's mission.

FOUNDERS' COUNCIL LEADERSHIP COMMITTEE

Thomas S. Ricketts^T
Co-Chair (2017 & 2018)

Liz D. Sharp^T
Co-Chair (2017)

Kevin P. Stineman^T
Co-Chair (2018)

Margaret Stineman^T
Co-Chair (2018)

Donna and Peter Freeman
Mrs. Noel Kaplan

Donna Keller

Robert B. Loveman^T

John E. McGovern III

Elisabeth C. Meeker

Lanny Passaro

Marty Peterson Shaw

John F. Podjasek III^T

Ryan S. Ruskin^T

Allison and Stephen Schmitt

Patricia Schnadig

Heather T. Sparling

Jessica Steffensen

Priscilla A. (Pam) and
Douglas H. Walter

Everett S. Ward^T

Ryan B. Whitacre

\$75,000+ CHAIRMAN'S CIRCLE DISTINGUISHED LEADERSHIP

Greg^T and Mamie Case
Charitable Fund

Mr.^T and Mrs. Michael L. Keiser

Mr. and Mrs.^T Dennis J. Keller

Mr.^T and Mrs. Madhavan K. Nayar

Mr. and Mrs.^T Michael D. Searle

Jai Shekhawat^T

Mr.^T and Mrs. W. Rockwell Wirtz

\$50,000 to \$74,999 CHAIRMAN'S CIRCLE LEADERSHIP

Mr.^T and Mrs. Norman R. Bobins

Rita and John^T Canning

Dr.^T and Mrs. Richard A.
Chaifetz

Mr.^T and Mrs. Michael W. Ferro, Jr.

Mr.^T and Mrs. Marshall Field V

Mr.^T and Mrs. James S. Frank

Linda and Wilbur^T Gantz

Mr. and Mrs.^T King W. Harris /
Harris Family Foundation

Pamela K.^T and Roger B. Hull

Mr.^T and Mrs. Richard L. Keyser

Robert M. and Diane^T von
Schlegell Levy

Mr.^T and Mrs. Bobby Mehta

The Negaunee Foundation

Jeanne M. and John W.^T Rowe

Cari and Michael^T Sacks

Jessica^T and Steve Sarowitz

Michael F. Tang^T

Robin and Mark^T Tebbe

Kimbra and Mark^T Walter

\$25,000 to \$49,999 CHAIRMAN'S CIRCLE

Anonymous (2)

Mr.^T and Mrs. Judson Bergman

Howard B. Bernick^T

Jackie and John^T Bucksbaum

Mr.^T and Mrs. Eduardo F.
Conrado

Mr.^T and Mrs. Kenneth W.
Coquillette

Mr.^T and Mrs. David Cotton

Mark Cozzi^T and James Goeke

Winnie and Bob^T Crawford

Marsha Cruzan^T and
Thomas McGinnis

Mr.^T and Mrs. Oscar A. David

Mr.^T and Mrs. Roger K.
Deromedi

Edna Foundation

Efroymsen Family Fund^T

Mr.^{DT} and Mrs. Richard Elden

Dr.^T and Mrs. Charles M. Falcone

Mr. and Mrs. Eugene F. Fama

Jamee Field Kane^T / The Edith
B. and Lee V. Jacobs Fund No. 1

Lori and Michael^T Flannery

Marshall B. Front Family
Charitable Foundation / Laura
De Ferrari and Marshall B.^T Front

Christina and Ron^T Gidwitz

Judy^T and Bill Greffin

Kelly^T and John Grier

Colette Johnston Hedien and
Wayne E. Hedien^T

David D. Hiller^T

Katie Hazelwood and
Todd Kaplan^T

Mr.^T and Mrs. Jeffrey B. Keller

Robert A. Kubicka

William C. Kunkler III^T and
Susan Crown / Crown Family
Philanthropies

Margaret B. MacLean^T

Clare Muñana^T

Mr.^T and Mrs. Neil S. Novich

Mr.^T and Mrs. Michael O'Grady

Mr.^T and Mrs. John F. Podjasek III

Alicia and Peter^T Pond

John^T and Colette Evans Rau

Cecelia and Thomas^T Ricketts

Mrs. William L. Searle

Michael E. Severino, MD^T

Matthew K.^T and Julie Simon

David J. and Dawn L.^T Solomon

Cia and Tom^T Souleles

Kim and Miles^T White

Melvin D. Williams^T

Mr.^T and Mrs. Patrick
Wood-Prince

Jason Wortendyke^T and
Ariel Knowles

\$10,000 to \$24,999 FOUNDERS' COUNCIL CONSERVATOR

Anonymous (4)

Larry J. Bell

Amy E. Best^T

Judith S. Block^T

Carol and Tom Butler

Rebecca Childers Caleel

Mr. and Mrs. Thomas Campbell

Henry T. Chandler^D

Joyce E. Chelberg

The Comer Foundation Fund

Cecilia and Froilan Concepcion

Mr. and Mrs. James J. Conrad

A. G. Cox Charity Trust

Mr.^T and Mrs. Kermit R. Crawford

The Crown Family

The Davee Foundation

Janet W. Diederichs

Richard A. Ditton

Janet and Craig Duchossois

Mr.^T and Mrs. Jeffrey T. Foland

Peggy V. Fossett^D / Peggy and
Steve Fossett Foundation

The Robert E. Gallagher
Charitable Trust

Mr. and Mrs. Richard C. Godfrey

Mr.^T and Mrs.^T Jack M. Greenberg

Mr.^T and Mrs. Lewis S. Gruber

Mary P. Hines

Dr. and Mrs. Wayne J. Holman III

J. Thomas Hurvis

Reinhardt H. and
Shirley R. Jahn Foundation

Mrs. Noel Kaplan

Mr. and Mrs. Keith Kizziah /
Malott Family Foundation

The Knowles Foundation

Laurie and Rich Kracum

Mr.^T and Mrs. Randolph Kurtz

Jan and Richard W.^{TE} Lariviere

Lavin Family Foundation

Gail J. and Robert B.^T Loveman

Mr.^T and Mrs. Scott P. Marks, Jr.

Mr.^T and Mrs. John W.
McCarter, Jr.

Kennon P. McKee, PsyD

Mr.^T and Mrs. Leo F. Mullin

Mr.^T and Mrs. Chris O'Herlihy

Mr. and Mrs. William A. Osborn

Renaissance Charitable
Foundation Inc.

Joan and Paul Rubschlager

Mr. and Mrs. Romolo Sidoli

Mr.^T and Mrs. Alejandro P. Silva

June M. Staackmann

Judith B. Sugarman

\$5,000 to \$9,999 FOUNDERS' COUNCIL SURVEYOR

Anonymous (2)

Mrs. T. Stanton Armour^T

E. M. Bakwin

Verna L. Baughman, MD

Susan M. Benton^T

Mr. and Mrs. David W. Bernauer

Mr. and Mrs. Andrew W. Brown

Rosemarie and
Dean L. Buntrock

Linda and Vincent Buonnano

Mr. and Mrs. Theodore R. Butz
/ The Butz Foundation

Callie Anne and W.^T Clark

Mary and Jim Costello

Mark Crane

Daphne and John Cunningham

Dr. and Mrs. Tapas K. Das Gupta

Mr. and Mrs. Mark D. Dawson

Cheryl and Michael Del Campo

Mr. and Mrs. James M. Denny

Thomas R. Doler

Monica Donath

Eldred-Harland Charitable
Fund at The Chicago
Community Foundation

Hattie A. and Marie V. Fatz
Foundation

Harve A. Ferrill

Mr. and Mrs. Peter D. Fischer

Sonia A. Florian

Ginny and Peter Foreman

Mr. and Mrs. Philip M.
Friedmann

Mr. and Mrs. Camillo Ghiron

Mr. and Mrs. James J. Glasser

Mr. and Mrs. John K. Greene

Mr. and Mrs. William J. Hagenah

Mr. and Mrs. Matthew C. Harris

Beverly and Warren Hayford

Lorraine M. Hurt and
George M. Ingram

Anna Marie and Jerry Kelly

Mr. and Mrs. T. Eric Kilcollin

Bruce and René Lauer

Liz and Eric Lefkofsky

Mr. and Mrs. Clark Lewey

Sandra L. Mueller

Mary Jane Nordlund

Mr.^T and Mrs. James J.
O'Connor, Jr.

China I. Oughton

Mr. and Mrs. Charles W. Palmer

Terry and Lanny Passaro

Mr. and Mrs. Maurice Patrick

Mr. and Mrs. Donald W.
Patterson

Mr. and Mrs. Norman Perman

Mr. and Mrs. Robert Raimondi

Helen S. Reed

D. Roskin

Mr. and Mrs. Robert J. Sanborn

Karla Scherer

Mr. and Mrs. Gordon Segal /
Segal Family Foundation

Roger D. Shaw, Jr.

Adele S. Simmons^T and
John L. Simmons

Richard M. Skolly and
Kate A. Feinstein

The Smart Family Foundation

Harold B. Smith

Mr. and Mrs. Neele E. Stearns, Jr.

Wendy Strauss

Carol C. Swift

Mr. and Mrs. John W. Taylor III

Mr. and Mrs. Ed Thayer

Mr.^T and Mrs. David M. Tolmie

Mrs. Herbert A. Vance

Mr. and Mrs. Robert J. Wagner

Everett S. Ward^T and Iris K. Sims

Stacey Weltmer

Barbara H. West^D

William J. White^T

The Abra Wilkin Fund

Wolff Income Charitable Fund

Mr. and Mrs. Kenneth J. Yager

**\$2,500 to \$4,999
FOUNDERS' COUNCIL
MEMBER**

Anonymous (8)

Mr. and Mrs. Gary D. Ahlquist

Mr. and Mrs. Douglas W. Allvine

The Allyn Foundation

Birute J. Apke

Michael D. Arnold and
Monica Wallace

Lucinda M. and David Baier

Susan and Stephen Baird

Randolph and Lorraine Barba

Mr. and Mrs. Aaron A. Barlow

Kara and Thomas Barta

Mr. and Mrs. Philip S. Beck

Deborah A. Bekken^E and
Richard G. Kron

Matthew Benoit and
Cathleen Dohrn

Mr. and Mrs. Stephen P. Bent

Mr. and Mrs. Harrington Bischof

Mr. and Mrs. Andrew K. Block

The Bloom-Kessler Family



Giving Day 2017

On October 11, the Field Museum's annual Giving Day energized communities of supporters, raising \$167,000 from 600+ donors in just one day. The theme—Science Matters; Science It Forward—built on the momentum of Day of Facts and the March for Science held earlier in the year. Staff giving continued to be a noteworthy feature of Giving Day with nearly 30 percent of staff members making a philanthropic contribution (up from 11 percent two years earlier).

R. Darrell Bock and
Renee Menegaz-Bock

Hyacinth and Le Monte G.^E
Booker, Sr.

Mr. and Mrs. John J. Borland, Jr.

Lori Breslauer^E

Michelle and David Buck

Campbell Family Foundation

Joan and Tom Castino

Mr. and Mrs. James
Casselberry, Jr.

Ceres Foundation

Mr. and Mrs. John S. Chapman

Annette and Thomas Cole

James W. Compton^T

Mr. and Mrs. Patrick Corrigan

William Cox

Kevin Coughlin and
Sue Burzawa

Mr. and Mrs. William A. Crane

Jim W. Croft and
Marilyn Martinson Croft

Rebecca E. Deaton

Mr. and Mrs. Robert O.
Delaney, Jr.

The DeThorne Family^E

Owen Deutsch and
Rona Talcott

Mr. and Mrs. James W.
DeYoung

Candice and Scott Dias

Daniel Diermeier^T and
Ariela Lazar

Richard A. Domanik and
Janice Y. Domanik

The Donnelley Foundation^T

Mr. and Mrs. John Draper

Glenda W. Duncan

Mignon Dupepe and
John Snyder

Thomas E. Durica and
Susan Jacob

Jon Ekdahl and Marcia Opp

Mr. and Mrs. Samuel H. Ellis
La and Philip Engel

Mrs. Jerome L. Ettelson

Mr. and Mrs. Rob Farr

Mr. and Mrs. W. James Farrell

Mr. and Mrs. Alexander H. Faurot

Mary and Bruce Feay

Mr. and Mrs. Kenneth P. Fischl

Donna and Peter Freeman

Mr. and Mrs. Joel M. Friedman

Christine D. Giannoni^E

Donna J. Godel and
Roger E. Godel

Mark Gold

Mary L. Gorno

Donald Grasso
 Delta A. Greene
 Joyce and Timothy Greening
 Stephanie and Greg Guyett
 Sally A. Hagan
 Tonja Rizai Hall
 Mr. and Mrs. Dean M. Harrison
 Mr. and Mrs. Thomas Z. Hayward, Jr.
 Mr. and Mrs. Duncan Healy
 Mr. and Mrs. Ted Helwig
 Mr. and Mrs. Patrick J. Herbert III
 Kimberlee S. Herold
 Robert Hevey, Jr. and Constance M. Filling
 Mr. and Mrs. John L. Hines
 Peggy L. Hoberg
 Mr. and Mrs. Thomas H. Hodges
 Mr. and Mrs. Richard M. Holm
 Mr. and Mrs. Arthur Holzheimer
 Maria R. Hrycelak, MD
 Ying Hsu and Donald R. Monson
 Laurie Huget and Werner Huget
 Jill Hutchison and David Rosholt
 Irish Woods Foundation
 Mr. and Mrs. James M. Johnson
 Pamela MacVicar Johnson
 Lynn and George Jones
 Linda M. Jung
 Kathleen and Alex Kallend
 Charles L. Katzenmeyer^E
 Mr. and Mrs. Eric Kauffman
 Mr. and Mrs. Eric Kennedy
 The King Family Foundation
 Mr. and Mrs. William J. Kirby
 Dennis and Kathleen Klaeser
 Becky and Lester Knight
 Mr. and Mrs. Glenn A. Kolososki
 Mr. and Mrs. Jim Korompilas
 Patricia Kosmerl
 Mr. and Mrs. Lawrence J. Krema
 Mr. and Mrs. Michael Kuta
 Mary Lawlor
 Wende L. Fox Lawson and Lawrence James Lawson
 Mr. and Mrs. Jordan Lowe
 Ilene and Lawrence Lubell
 Mr. and Mrs. John Luscombe
 Douglas R. MacAyeal and Linda A. MacAyeal
 Thomas T. Macejko, Jr. and Amanda Maw Macejko
 Mr. and Mrs. John W. Madigan
 Mr. and Mrs. Timothy J. Malloy
 Sandy and Jerry Manne
 Todd Marek and Vana Thayu
 Marie A. Marotta
 Jamie C. Marshall and Richard Sobkowiak
 Mr. and Mrs. John E. McGovern III
 McKee Family Foundation
 Agnes McKinney^D
 Mr. and Mrs. John McLean
 Mr. and Mrs. Charles P. McQuaid
 Erma S. Medgyesy
 Elisabeth C. Meeker
 Pamela G. Meyer
 Pamela L. Miles
 Moller Family Foundation
 Mr. and Mrs. Thomas M. Mulcahy
 Mr. and Mrs. Tom Murray
 Mr. and Mrs. Richard Naponelli
 Alexandra C. and John D. Nichols
 James H. Niehoff and Jolie R. Macier
 Mr. and Mrs. Craig Niemann
 Christina J. Norton and John A. Biek
 Mr.^F and Mrs. John R. O'Connell
 Mr.^T and Mrs. James J. O'Connor, Sr.
 Virginia O'Neill
 Stephanie Ortel
 The Richard Laurence Parish Foundation
 Dr. and Mrs. William Parkhurst
 Jo Ann and Joseph Paszczyk
 Robin and Matthew Patinkin
 Mr. and Mrs. Robert P. Perkaus, Jr.
 Denise Peterson
 Mr. and Mrs. Craig A. Pickenpaugh
 Beverly and Stephen Pinaire
 Mr. and Mrs. Charles J. Pitman
 Mr. and Mrs. Charles S. Potter, Jr.
 Mr. and Mrs. Paul C. Poy
 Irwin Press and Andra Press
 Claire F. Prussian
 Mr. and Mrs. John W. Puth



Conservation Celebration

On April 18, the Field Museum presented the 2017 Parker/Gentry Award to marine science researcher David E. Vaughn, PhD. This annual award is presented at the Conservation Celebration to a leader in conservation biology. Dr. Vaughn is the executive Director of the Mote Tropical Research Lab in the Florida Keys, leading Mote's Coral Reef Restoration Program to re-establish the underwater forest.

James A. Radtke and Susan A. Kressin
 Mr. and Mrs. William Radzevich
 Ginevra Stirling Ranney^E and Ben Ranney
 Mr. and Mrs. Miles Ridgway
 Roberts Family Foundation
 Anita J. Rogers
 Mr. and Mrs. Phillip B. Rooney
 Mr. and Mrs. Jeffrey S. Ross
 Mr. and Mrs. Norman J. Rubash
 Susan B. Rubnitz
 Ryan Ruskin^T and Michael Andrews
 Rusty^E and Debbie Russell
 David W. Ruttenberg
 Mr. and Mrs. Patrick G. Ryan
 Linda E. Salisbury
 Yousuf and Dilara Sayeed
 Barbara M. Schleck and Gary M. Ropski
 Douglas M. Schmidt
 Mr. and Mrs. Richard H. Schnadig
 Karen and Frank Schneider
 Barbara and Tom Schnitzer
 Mr. and Mrs. Sean Scott
 Mr. and Mrs. Michael Sebastian
 Mr. and Mrs. Alan Sebulsky
 Monica and Stephen Sentoff
 Robert M. Shafis^E and Carol A. Erickson
 Mr. and Mrs.^T Jeffrey S. Sharp
 Sally Sharp
 Bob and Charlene Shaw
 Pam and Tom Sheffield / JS Charitable Trust
 Q. Phia Sherry and Neal Sherry
 Kass F. Sigal
 Dolores Silverman
 Toni Sandor Smith
 Elizabeth L. Snyder
 Amanda A. Sonneborn and Peter R. Malecki
 The Sparacio Family
 Heather T. Sparling and Jason Bakk

Barbara A. Speer
 Thomas A. Stemwedel and
 Paula A. Borg
 Liz Stiffel
 Doug Stiles
 Mr.^T and Mrs.^T Kevin Stineman
 Kevin L. Stoeckel and
 Emily Heisley Stoeckel
 Mr. and Mrs. Ivan G. Strauss
 Steven Strohmeier^E and
 Josie Brown
 Mr. and Mrs. Harvey J. Struthers
 Arthur Susman and
 Carole Stone
 Mr. and Mrs. Robert N. Szalay
 Jenny and Flip Templeton
 Carol and Jim Tichy
 Glenn and Jacqueline Tilton
 Mr. and Mrs. Thomas Tisbo
 Mr. and Mrs. James A. Tuchler
 Anne Van Wart and
 Michael Keable
 Mr. and Mrs. Thomas F. Veldman
 Mr. and Mrs. David J. Vitale
 Mr. and Mrs. Frederick G.
 Wacker III
 Nancy L. Wald^D
 Mr. and Mrs. Douglas H. Walter
 Mr. and Mrs. John R. Walter
 Dilnaz and Qaiser Waraich
 Paul Waters and Nancy Bugajski
 Carrie and Jay Weaver
 Amy Welzer
 Ryan B. Whitacre and
 Katherine T. Donaldson
 Jean Ann White and
 Helene Beisecker
 Crystina Williams and
 Amy Heaney
 Claudia L. Winkler
 Nancy Hamill Winter
 Mr. and Mrs. William E. Wolf
 Mr. and Mrs. Tom Wotovich
 Mr. and Mrs. Robert Zentner

2017 Contributions

Philanthropy at the
 Field Museum supports
 the institution's people
 and programs. These
 contributions and grants
 promote scientific research,
 create world-famous
 exhibitions, provide
 opportunities for education,
 and keep the Museum's
 doors open 364 days a year.

\$5,000,000+

Anonymous
 The Grainger Foundation, Inc.
 Kenneth C. Griffin
 Charitable Fund

\$1,000,000 to \$4,999,999

Anonymous
 Bobolink Foundation
 Rita and John^T Canning
 Efroymson Family Fund^T
 Linda and Wilbur^T Gantz
 ITW
 Mr.^T and Mrs. Michael L. Keiser
 Mr. and Mrs.^T Dennis J. Keller
 Robert R. McCormick
 Foundation
 The Negaunee Foundation
 Jeanne M. and John W.^T Rowe

\$500,000 to \$999,999

Anonymous
 Mr.^T and Mrs. Marshall Field V
 Hamill Family Foundation
 Magellan Corporation
 National Science Foundation
 The Andrew W. Mellon
 Foundation
 Daniel F. and Ada L. Rice
 Foundation

\$100,000 to \$499,999

Anonymous (3)
 AbbVie
 American Council
 of Learned Societies
 Aon
 ArcelorMittal
 The Barker Welfare Foundation
 Barbara^E and Roger Brown

Jackie and John^T Bucksbaum
 Winnie and Bob^T Crawford
 D & R Fund / Glasser and
 Rosenthal Families
 Mr.^T and Mrs. Roger K. Deromedi
 Discover
 The Duchossois Family
 Foundation
 Ernst & Young LLP
 Mr.^T and Mrs. Michael W. Ferro, Jr.
 Jamee Field Kane^T / The Edith
 B. and Lee V. Jacobs Fund No. 1
 Lori and Michael^T Flannery
 Mr.^T and Mrs. James S. Frank
 Julian Grace Foundation
 Karen Z. Gray-Krehbiel and
 John H. Krehbiel, Jr.
 Integrated DNA Technologies
 Institute of Museum and
 Library Services
 The Edith B. and Lee V. Jacobs
 Fund No. 3
 Edgar D. Jannotta, Sr.
 John D. and Catherine T.
 MacArthur Foundation
 Fay and Daniel Levin
 Barry L. MacLean
 Chauncey and Marion D.
 McCormick Family Foundation
 Mr.^T and Mrs. Bobby Mehta
 Gordon E. and Betty I. Moore
 Foundation
 National Park Service
 Nicor Gas
 Northern Trust
 Mr.^T and Mrs. John F. Podjasek III
 Prince Charitable Trusts
 The Searle Family Funds at
 The Chicago Community Trust
 Mr. and Mrs.^T Michael D. Searle
 Bob and Charlene Shaw
 Jai Shekhawat^T
 Rose L. Shure^D
 Matthew K.^T and Julie Simon
 Cia and Tom^T Soules
 Robin and Mark^T Tebbe
 United Airlines
 Wirtz Corporation
 Mr.^T and Mrs. W. Rockwell Wirtz
 Mr.^T and Mrs. Patrick
 Wood-Prince

\$50,000 to \$99,999

Anonymous (2)
 Abbott
 Paul M. Angell Family
 Foundation
 Howard B. Bernick^T
 Mr.^T and Mrs. Norman R. Bobins
 The Brinson Foundation
 Greg^T and Mamie Case
 Charitable Fund
 Dr.^T and Mrs. Richard A. Chaifetz
 Chicago Blackhawks Foundation
 The Chicago Community Trust
 Crown Family Philanthropies
 Gaylord & Dorothy Donnelley
 Foundation
 Exelon
 Marshall B. Front Family
 Charitable Foundation / Laura
 De Ferrari and Marshall B.^T Front
 Christina and Ron^T Gidwitz
 Sally Mead Hands Foundation
 Harris Family Fund of The New
 York Community Trust
 Mr. and Mrs.^T King W. Harris /
 Harris Family Foundation
 Stephanie C. Harris / The Edith
 B. and Lee V. Jacobs Fund No. 2
 Betty S. Hess^D
 David D. Hiller^T
 Pamela K.^T and Roger B. Hull
 JPMorgan Chase & Co.
 Katie Hazelwood and
 Todd Kaplan^T
 Mr.^T and Mrs. Jeffrey B. Keller
 Mr.^T and Mrs. Richard L. Keyser
 Mr. and Mrs. Fred A. Krehbiel
 Bruce and René Lauer
 Robert M. and Diane^T von
 Schlegell Levy
 Margaret B. MacLean^T
 Andrew H. Mathis
 Motorola Solutions Foundation
 Mr.^T and Mrs. Madhavan K. Nayar
 Alexandra C. and John D. Nichols
 Karen A. Nordquist
 Norwottock Charitable Trust
 Polk Bros. Foundation
 Alicia and Peter^T Pond
 Betty D. Prout^D

Quest Foundation
 John^T and Colette Evans Rau
 Cari and Michael^T Sacks
 Mr. and Mrs.^T Jeffrey S. Sharp
 Adele S. Simmons^T and
 John L. Simmons
 Michael F. Tang^T
 U.S. Bank
 U.S. Fish and Wildlife Service
 Kimbra and Mark^T Walter
 Kim and Miles^T White

\$25,000 to \$49,999

Anonymous (3)
 The Robert and Isabelle Bass
 Foundation, Inc.
 Mr.^T and Mrs. Judson Bergman
 Judith S. Block^T
 The Boeing Company
 Rosemarie and Dean L.
 Buntrock
 Chase Private Client
 Joyce E. Chelberg
 Elizabeth F. Cheney Foundation
 Citadel LLC
 Mr.^T and Mrs. Eduardo F.
 Conrado
 Mr.^T and Mrs. Kenneth W.
 Coquillette
 Mr.^T and Mrs. David Cotton
 Mark Cozzi^T and James Goeke
 Rose Marie Craig^D
 Marsha Cruzan^T and
 Thomas McGinnis
 Janet and Craig Duchossois /
 The Duchossois Group, Inc.
 Edna Foundation
 Mr.^{DT} and Mrs. Richard Elden
 Dr.^T and Mrs. Charles M. Falcone
 Mr. and Mrs. Eugene F. Fama
 Mary and Bruce Feay
 The Field Foundation of Illinois
 Jamee J. Field
 Ford Motor Company Fund
 Dr. Evelyn Frank Trust
 Julius N. Frankel Foundation
 GCM Grosvenor
 Goldman, Sachs & Co.
 Ellis Goodman Family
 Foundation
 Mr.^T and Mrs.^T Jack M.
 Greenberg

Judy^T and Bill Greffin
 Kelly^T and John Grier
 John R. Halligan Charitable Fund
 Colette Johnston Hedien and
 Wayne E. Hedien^T
 Robert A. Kubicka, MD
 William C. Kunkler III^T and
 Susan Crown
 Mr.^T and Mrs. Randolph Kurtz
 Caron and Alan Lacy
 Leo Burnett Worldwide
 McDonald's Corporation
 The Morton Arboretum
 Clare Muñana^T
 National Material L.P.
 National Oceanic and
 Atmospheric Administration
 Mr.^T and Mrs. Neil S. Novich
 Mr.^T and Mrs. Michael O'Grady
 Mr. and Mrs. William A. Osborn
 Peoples Gas
 Pepsi Beverages Company
 Michael and Tanya Polsky
 The Regenstein Foundation
 Cecelia and Thomas^T Ricketts
 Mr. and Mrs. Phillip B. Rooney
 Joan and Paul Rubschlager
 Mr. and Mrs. Patrick G. Ryan
 Mr. and Mrs. Richard H.
 Schnadig
 Mrs. William L. Searle
 Michael E. Severino, MD^T
 David J. and Dawn L.^T Solomon
 Walgreens
 A. Montgomery Ward
 Foundation
 Melvin D. Williams^T
 Jason Wortendyke^T and
 Ariel Knowles

\$10,000 to \$24,999

Anonymous (8)
 Adams Street Partners LLC
 Allstate Insurance Company
 American International
 Group, Inc.
 Aramark
 Mr. and Mrs. Jeffrey S. Aronin
 Baxter International Inc.
 Bears Care
 Larry J. Bell

Susan M. Benton^T
 Carol L. Bernick
 Amy E. Best^T
 Bloomberg
 Mr. and Mrs. Nathan A. Brown
 The Buchanan Family
 Foundation
 Michael and Caroline Burns
 Carol and Tom Butler
 Rebecca Childers Caleel
 Dianne and Thomas Campbell
 Henry T. Chandler^D
 Chicago Public Schools
 Chicago Title & Trust Company
 Foundation
 CIBC
 Comcast Corporation
 The Comer Foundation Fund
 ComPsych Corporation
 ConAgra Brands
 Cecilia and Froilan Concepcion
 Mr. and Mrs. James J. Conrad
 A. G. Cox Charity Trust
 Mr.^T and Mrs. Kermit R. Crawford
 The Crown Family
 Daphne and John Cunningham
 The Davee Foundation
 Mr. and Mrs. James M. Denny
 Janet W. Diederichs
 Richard A. Ditton
 Shawn M. Donnelley and
 Christopher M. Kelly
 Dover Corporation
 Mr.^T and Mrs. Jeffrey T. Foland
 Peggy V. Fossett^D / Peggy and
 Steve Fossett Foundation
 The Robert E. Gallagher
 Charitable Trust
 Mr. and Mrs. Camillo Ghiron
 Mr. and Mrs. Richard C. Godfrey
 W.W. Grainger, Inc.
 Mr.^T and Mrs. Lewis S. Gruber
 Tonja Rizai Hall
 Mary P. Hines
 Hoellen Family Foundation
 Mr. and Mrs. Geoff Hoffmann
 Dr. and Mrs. Wayne J. Holman III
 Susan D. Hoyne^D
 Maria R. Hrycelak, MD
 J. Thomas Hurvis

Integrated Electric
 Reinhardt H. and
 Shirley R. Jahn Foundation
 Jocarno Fund
 Mrs. Noel Kaplan
 Dennis and Kathleen Klaeser
 The Knowles Foundation
 Laurie and Rich Kracum
 Jan and Richard W.^{TE} Lariviere
 Lavin Family Foundation
 Legacy Foundation
 Gail J. and Robert B.^T Loveman
 Mr. and Mrs. Keith Kizziah /
 Malott Family Foundation
 Mr.^T and Mrs. Scott P. Marks, Jr.
 Mr.^T and Mrs. John W.
 McCarter, Jr.
 Kennon P. McKee, PsyD
 Mr. and Mrs. Andrew J.
 McKenna, Sr.
 Mr.^T and Mrs. W. James
 Mc Nerney, Jr.
 Florence J. Mikowski^D
 Molex Incorporated
 Moller Family Foundation
 Prince Albert II of Monaco
 Foundation USA
 Morgan Stanley
 Mr.^T and Mrs. Leo F. Mullin
 National Endowment
 for the Humanities
 Mr.^T and Mrs. Chris O'Herlihy
 Mr.^T and Mrs. James J.
 O'Connor, Sr.
 China I. Oughton
 Jo Ann and Joseph Paszczyk
 Helen J. Petersen^D
 Renaissance Charitable
 Foundation Inc.
 Mr. and Mrs. J. Christopher
 Reyes
 Mr. and Mrs. Larry D. Richman
 S&C Electric Company
 S&P Global
 Sailor Jerry Spiced Rum
 Mr. and Mrs. Gordon I. Segal /
 Segal Family Foundation
 Mr. and Mrs. Romolo Sidoli
 Mr.^T and Mrs. Alejandro P. Silva
 Siragusa Family Foundation
 Mr. and Mrs. Charles H.
 Solberg, Jr.



Field of Champions

On the evening of September 7, Museum Staff, Founders' Council members, Trustees, and guests attended Field of Champions, an event hosted by Field Trustee and Chicago Cubs Chairman Tom Ricketts at Wrigley Field. Showcasing the work of Museum scientists and baseball experts, booths were set up on the field and in the Cubs clubhouse. Guests could even go up to the press box, see the new clubhouse, and sit in the Cubs' dugout. Before the evening began, the Field's President and CEO Richard Lariviere, PhD, Tom Ricketts, and his Founders' Council Co-Chair Trustee Liz Sharp all spoke to the guests about the Museum and the importance of the Founders' Council. More than 750 guests attended this unique and spirited event.

Barbara A. Speer
June M. Staackmann
Mr. and Mrs. Neele E. Stearns, Jr.
Judith B. Sugarman
Tave Risk Management
Mr. and Mrs. Thomas Tisbo
Mr.[†] and Mrs. David M. Tolmie
Mr. and Mrs. Bruce W. White
William Blair & Company
Winston & Strawn LLP

\$5,000 to \$9,999

Anonymous (7)
36 Foundation, Inc.
Mrs. T. Stanton Armour[†]
E. M. Bakwin
Ricardo M. Basch[‡]
Mr. and Mrs. Frank L. Bauer
Verna L. Baughman, MD
Mr. and Mrs. David W. Bernauer
BlueCross BlueShield of Illinois
The Robert Thomas Bobins Foundation
Mr. and Mrs. Andrew W. Brown
Linda and Vincent Buonnano
Mr. and Mrs. Theodore R. Butz / The Butz Foundation
Campbell Family Foundation
Callie Anne and W.[†]H.[†]T. Clark
Mary and Jim Costello
Mark Crane
Dr. and Mrs. Tapas K. Das Gupta
Mr.[†] and Mrs. Oscar A. David

Mr. and Mrs. Mark D. Dawson
Cheryl and Michael Del Campo
Mr. and Mrs. Robert O. Delaney, Jr.
The DeThorne Family[‡]
DHR International
Mr. and Mrs. Byram E. Dicks
Thomas R. Doler
Monica Donath
John A. Edwardson
Environmental Defense Fund
Evans Food Group Ltd.
Mr. and Mrs. William F. Farley
Hattie A. and Marie V. Fatz Foundation
Mr. and Mrs. Alexander H. Faurot
Mr. and Mrs. Robert Feitler
Fellowes Brands
Harve A. Ferrill
Mr. and Mrs. Peter D. Fischer
Sonia A. Florian
Ginny and Peter Foreman
Mr. and Mrs. Philip M. Friedmann
Mr. and Mrs. James P. Gorter
Grant Thornton LLP
Richard[‡] and Mary L. Gray
Mr. and Mrs. John K. Greene
Mr. and Mrs. William J. Hagenah
Wolff Income Charitable Fund
Hanley Foundation
Eldred-Harland Charitable

Fund at The Chicago Community Foundation
Harris Family Foundation
Mr. and Mrs. Matthew C. Harris
Beverly and Warren Hayford
Lorraine M. Hurt and George M. Ingram
I & G Charitable Foundation
Indo-American Heritage Museum
Ingredion Incorporated
The Joyce Foundation
Charles L. Katzenmeyer[‡]
Anna Marie and Jerry Kelly
Mr. and Mrs. T. Eric Kilcollin
Liz and Eric Lefkowsky
Mr. and Mrs. Clark Lewey
Mr. and Mrs. John D. Mabie
Manaaki Foundation
Mr. and Mrs. John McLean
Metropolitan Water Reclamation District of Greater Chicago
Joan and Charles Moore
Sandra L. Mueller
Mr. and Mrs. Thomas M. Mulcahy
Mary Jane Nordlund
Mr.[†] and Mrs. James J. O'Connor, Jr.
Stephanie Ortel
Mr. and Mrs. Charles W. Palmer
Terry and Lanny Passaro

Mr. and Mrs. Maurice Patrick
Mr. and Mrs. Donald W. Patterson
Mr. and Mrs. Norman Perman
Mr. and Mrs. Mane Pritza
Claire F. Prussian
Mr. and Mrs. Robert Raimondi
Helen S. Reed
Mr. and Mrs. Andrew M. Rosenfield
D. Roskin
Mr. and Mrs. John W. Rutledge
Mr. and Mrs. Robert J. Sanborn
Karla Scherer
Carol H. Schneider
Charles & M.R. Shapiro Foundation, Inc.
Roger D. Shaw, Jr.
Sirius Fund
Richard M. Skolly and Kate A. Feinstein
The Smart Family Foundation
Harold B. Smith
Toni Sandor Smith
Wendy Strauss
Sulzer Family Foundation
Carol C. Swift
Mr. and Mrs. John W. Taylor III
Mr. and Mrs. Ed Thayer
Jane B.[‡] and Chester D.[‡] Tripp
Mrs. Herbert A. Vance

Mr. and Mrs. Robert J. Wagner
 Mr. and Mrs. John R. Walter
 Everett S. Ward[†] and Iris K. Sims
 The Warwick Foundation
 Stacey Weltmer
 Barbara H. West
 William J. White[†]
 Lawrence G. Wilcox^D
 The Abra Wilkin Fund
 Wolff Income Charitable Fund
 Mr. and Mrs. Kenneth J. Yager

\$2,500 to \$4,999

Anonymous (7)
 Charles Adams Nature
 Research Foundation
 Adtalem Global Education
 Mr. and Mrs. Gary D. Ahlquist
 Mr. and Mrs. Douglas W. Allvine
 The Allyn Foundation
 American Agricultural
 Insurance Company
 Birute J. Apke
 Michael D. Arnold and
 Monica Wallace
 Lucinda M. and David Baier
 Sue and Stephen Baird
 Randolph and Lorraine Barba
 Mr. and Mrs. Aaron A. Barlow
 Kara and Thomas Barta
 Mr. and Mrs. Philip S. Beck
 Helene Beisecker and
 Jean Anne White
 Deborah A. Bekken^E and
 Richard G. Kron
 Matthew Benoit and
 Cathleen Dohrn
 Mr. and Mrs. Stephen P. Bent

Mr. and Mrs. Harrington Bischof
 Mr. and Mrs. Andrew K. Block
 The Bloom-Kessler Family
 R. Darrell Bock and
 Renee Menegaz-Bock
 Hyacinth and Le Monte G.^E
 Booker, Sr.
 Mr. and Mrs. John J. Borland, Jr.
 Helen V. Brach Foundation
 Lori Breslauer^E
 Michelle and David Buck
 Mr. and Mrs. James
 Casselberry, Jr.
 Joan and Tom Castino
 Center for Carbon Removal
 Mr. and Mrs. John S. Chapman
 Annette and Thomas Cole
 James W. Compton[†]
 Mr. and Mrs. E. David Coolidge III
 Mr. and Mrs. Patrick Corrigan
 The Couch Family Foundation
 Kevin Coughlin and
 Sue Burzawa
 William Cox
 Mr. and Mrs. William A. Crane
 Jim W. Croft and
 Marilyn Martinson Croft
 Mr. and Mrs. Robert J. Darnall
 Rebecca E. Deaton
 Owen Deutsch and
 Rona Talcott
 Mr. and Mrs. James W. DeYoung
 Candice and Scott Dias
 Daniel Diermeier[†] and
 Ariela Lazar
 Richard A. Domanik and
 Janice Y. Domanik
 The Donnelley Foundation[†]
 Mr. and Mrs. John Draper

Glenda W. Duncan
 Mignon Dupepe and
 John Snyder
 Thomas E. Durica and
 Susan Jacob
 Ecolab Inc.
 Jon Ekdahl and Marcia Opp
 Mr. and Mrs. Samuel H. Ellis
 La and Philip Engel
 Mrs. Jerome L. Ettelson
 Mr. and Mrs. Rob Farr
 Mr. and Mrs. W. James Farrell
 Amy and Cameron Findlay
 Mr. and Mrs. Kenneth P. Fischl
 Donna and Peter Freeman
 Mr. and Mrs. Joel M. Friedman
 Christine D. Giannoni^E
 Donna J. Godel and
 Roger E. Godel
 Mark Gold
 Mary L. Gorno
 Donald Grasso
 Delta A. Greene
 Joyce and Timothy Greening
 Stephanie and Greg Guyett
 Sally A. Hagan
 Irving Harris Foundation
 Mr. and Mrs. Dean M. Harrison
 Malcolm H. Hast
 Mr. and Mrs. Thomas Z.
 Hayward, Jr.

Mr. and Mrs. Duncan Healy
 Mr. and Mrs. Ted Helwig
 Mr. and Mrs. Patrick J. Herbert III
 Kimberlee S. Herold
 Robert Hevey, Jr. and
 Constance M. Filling
 Mr. and Mrs. John L. Hines
 Peggy L. Hoberg
 Mr. and Mrs. Thomas H. Hodges
 Heidi and Richard Holm
 Mr. and Mrs. Arthur Holzheimer
 Ying Hsu and Donald R. Monson
 Laurie Huget and Werner Huget
 Jill Hutchison and David Rosholt
 Mrs. Robert C. Hyndman
 Irish Woods Foundation
 Jeani and Rich Jernstedt
 Mr. and Mrs. James M. Johnson
 Pamela MacVicar Johnson
 Lynn and George Jones
 Linda M. Jung
 Kathleen and Alex Kallend
 Mr. and Mrs. Eric Kauffman
 Anne Kavanagh and Terry Smith
 Mr. and Mrs. Eric Kennedy
 The King Family Foundation
 Mr. and Mrs. William J. Kirby
 Becky and Lester Knight
 Mr. and Mrs. Glenn A. Kolososki
 Mr. and Mrs. Jim Korompilas

66th Annual Members' Nights

On May 18 and 19, the Field Museum hosted its 66th Annual Members' Nights. Enjoying special viewing opportunities, Museum members were able to see oversized artifacts from *Ancient Mediterranean: Cultures in Contact* as an extension of the exhibition. Among many other demos and events, members also learned about storing dinosaur bones and mammal specimens. On the Main Level of the Museum, guests met Kanza artist Chris Pappan and Lakota artist Rhonda Holy Bear for an exploration in contemporary Native American art. Nearly 7,000 members and guests attended this always popular tradition.



Patricia Kosmerl	Virginia A. O'Neill	Dolores Silverman	\$1,000 to \$2,499
Mr. and Mrs. Lawrence J. Crema	The Richard Laurence Parish Foundation	Elizabeth L. Snyder	Anonymous (8)
Mr. and Mrs. Michael Kuta	Dr. and Mrs. William R. Parkhurst	Amanda A. Sonneborn and Peter A. Malecki	Mr. and Mrs. John Aalbregtse
Mary Lawlor	Robin and Matthew Patinkin	The Sparacio Family	Joan and A. Robert Abboud
Wende L. Fox Lawson and Lawrence James Lawson	Mr. and Mrs. Robert P. Perkaus, Jr.	Heather T. Sparling and Jason Bakk	Dennis Abboud
Mr. and Mrs. Jordan Lowe	Mr. and Mrs. Andrew H. Shaw	Mr. and Mrs. Erik Steffensen	Eva Adler and Lorica Adler
Lubee Bat Conservancy	Denise Peterson	Thomas A. Stemwedel and Paula A. Borg	Anna and Kent Alcott
Ilene and Lawrence Lubell	Mr. and Mrs. Craig A. Pickenpaugh	Liz Stiffel	Alexander Ross Group
Mr. and Mrs. John Luscombe	Beverly and Stephen Pinaire	Doug Stiles	Brayton and Pim Alley
Douglas R. MacAyeal and Linda A. MacAyeal	Mr. and Mrs. Charles J. Pitman	Mr. [†] and Mrs. [†] Kevin Stineman	AMSTED Industries Foundation
Thomas T. Macejko, Jr. and Amanda Maw Macejko	Mr. and Mrs. Charles S. Potter, Jr.	Kevin L. Stoeckel and Emily Heisley Stoeckel	Darrell and Deb Anderson
Mr. and Mrs. John W. Madigan	Mr. and Mrs. Paul C. Poy	Mr. and Mrs. Ivan G. Strauss	Judith M. Anderson
Mr. and Mrs. Michael S. Magnuson	Irwin Press and Andra Press	Steven Strohmeier [‡] and Josie Brown	Rodney Austin
Mr. and Mrs. Timothy J. Malloy	Mr. and Mrs. John W. Puth	Mr. and Mrs. Harvey J. Struthers	Margaret B. and Harry Axelrod Charitable Trust Fund
Sandy and Jerry Manne	James A. Radtke and Susan A. Kressin	Arthur Susman and Carole Stone	James J. Barrett
Todd Marek and Vana Thayu	Mr. and Mrs. William Radzevich	Mr. and Mrs. Robert N. Szalay	Warren L. Batts
Marie A. Marotta	Mr. and Mrs. Miles Ridgway	Jenny and Flip Templeton	Mr. and Mrs. James N. Bay, Jr.
Jamie C. Marshall and Richard Sobkowiak	Mr. and Mrs. Bernard B. Rinella	Ceres Foundation	Elizabeth Anne Beal and Neil Stempel
Susan [‡] and John McBride	Roberts Family Foundation	Carol and Jim Tichy	Dr. and Mrs. Robert A. Beatty
Nancy A. McDaniel	Anita J. Rogers	Glenn and Jacqueline Tilton	Michael Beem
Mr. and Mrs. John E. McGovern III	Mr. and Mrs. Jeffrey S. Ross	Mr. and Mrs. James A. Tuchler	Rüdiger Bieler [‡] and Petra Sierwald [‡]
McKee Family Foundation	Mr. and Mrs. Norman J. Rubash	Anne Van Wart and Michael Keable	Katherine Birk
Agnes McKinney [‡]	Susan B. Rubnitz	Ryan VanHolsbeke [‡]	Molly and Trenton Curtis Blythe
Mr. and Mrs. Charles P. McQuaid	Ryan Ruskin [‡] and Michael Andrews	Mr. and Mrs. Thomas F. Veldman	Beth and Scott Brady
Erma S. Medgyesy	Rusty [‡] and Debbie Russell	Mr. and Mrs. Kenneth A. Viellieu	Richard T. Brannegan
Elisabeth C. Meeker	David W. Ruttenberg	Mr. and Mrs. David J. Vitale	Mr. and Mrs. Robert B. Breisblatt
Pamela G. Meyer	Sahara Enterprises, Inc.	Mr. and Mrs. Frederick G. Wacker III	Mrs. Cameron Brown
Pamela L. Miles	Linda E. Salisbury	Nancy L. Wald [‡]	William and Nancy Brown
Scott Mills	Yousuf and Dilara Sayeed	Mr. and Mrs. Douglas H. Walter	Ellen S. Buchen
Mr. and Mrs. Robert R. Moeller	Barbara M. Schleck and Gary M. Ropski	Dilnaz and Qaiser Waraich	Samuel and Beth Buchsbaum
Anthony G. Montag, MD and Katherine L. Griem, MD	Douglas M. Schmidt	Paul Waters and Nancy Bugajski	Mr. and Mrs. Willard Bunn III
Mr. and Mrs. Tom Murray	Karen and Frank Schneider	Carrie and Jay Weaver	The Achnacarry Foundation / Lenore and Douglas Cameron
Mr. and Mrs. Richard Naponelli	Barbara and Tom Schnitzer	Amy Welzer	Mrs. Robert Adams Carr [‡]
Natural Resources Defense Council	Mr. and Mrs. Sean Scott	Ryan B. Whitacre and Katherine T. Donaldson	Mrs. Silas S. Cathcart
Dr. and Mrs. Walter B. Newsom	Mr. and Mrs. Michael Sebastian	Crystina Williams and Amy Heaney	Chicago Botanic Garden
James H. Niehoff and Jolie R. Macier	Susan and Alan Sebulsky	Claudia L. Winkler	Mr. and Mrs. Peter W. Rogers
Mr. and Mrs. Craig Niemann	Monica and Stephen Sentoff	Nancy Hamill Winter	Josephine Chyatte
Christina J. Norton and John A. Biek	Robert M. Shafis [‡] and Carol A. Erickson	Mr. and Mrs. William E. Wolf	Nathaniel Purdy Clapp
Mr. [‡] and Mrs. John R. O'Connell	Sally Sharp	Mr. and Mrs. Tom Wotovich	Mr. and Mrs. Keith Clayton
Old Republic International Corporation	Pam and Tom Sheffield / JS Charitable Trust	Mr. and Mrs. Robert Zentner	Mr. and Mrs. John T. Coletta
	Q. Phia Sherry and Neal Sherry		Jenny Lynd Corley
	Shure Incorporated		Mr. and Mrs. George Covington
	Kass F. Sigal		Professor [‡] and Lady Peter R. Crane
			Charles F. Custer

William R. Darman and
Maria Mau

Dr. and Mrs. Lloyd Davidson
Rebecca Davidson

Mr. and Mrs. William L. Davis III
Lidia B. Devonshire
Draper and Kramer

Mr. and Mrs. Phillip L. Elbert
Cherelynn A. Elliott
Energy Foundation

The Donald Ephraim Family
Foundation

Facilitated Solutions
International

Mrs. Joseph N. Field^D
Judith Findorff and
Kristen Marron

Edward T. Fishwick and
Mary M. Case

Dorothy M. Flisk
Susan Flynn

Food for Thought Catering
Adrian R. Foster

Mrs. Zollie S. Frank Fund
Deborah and Charles Frank
Joanne Benazzi Friedland

Gary S. Friedlander and
Wendy Sabbath

Mr. and Mrs. John E. Gepson
Virginia and Gary Gerst
Kamala and Kanwal Ghaey
GKN Foundation

Mr. and Mrs. Christopher O.
Glass

Nika Gloyeske
Maureen Glynn

Katherine and Frederick Gnadt
John D. Goerner

Julia Goff and Greg Goff
Walter and Karla Goldschmidt
Foundation

John C. Goodall, Jr.
Ilene S. Gordon and
Abram I. Bluestein

Mary W. Graham
Anastasia Gutting
Suzanne Gylfe

Mattie H. Harris
Dorothy Harza
Barbara J. Hebda
Mr. and Mrs. James P. Hepp

Mr. and Mrs. Joseph
Hernandez

Cynthia S. Heusing and
David H. Kistenbroker

Mr. and Mrs. Robert M. Hickey
Mr. and Mrs. C. Clarkson Hine
Joan R. Hoatson

Charles^D and Stephanie
Hofbauer

Mr. and Mrs. Richard C.
Hoffman, Jr.

Mr. and Mrs. Fred Holubow
Janice Honigberg

Andrew and Cheri Houha
Mr.^D and Mrs. Peter H. Huizenga
Susan and Tex Hall

Mr. and Mrs. Christopher Hurley
Patricia J. Hurley
IBM

Datin Tan Fui Lian and
Datuk Dr. Robert F. Inger

Mr. and Mrs. Fruman Jacobson
Mr. and Mrs. Andrew M. Jessen
Beverly Joutras

Mr. and Mrs. Jordan L. Kaplan
Mrs. Thomas A. Kelly

Shyam Khatau and
Kavita Chandra

Heidi and Mitchell Kiesler
Lynne King Roberts
King Spruce Company
Holly King

Mr. and Mrs. Tom Kingsbury
Mr. and Mrs. John E. Kirkpatrick
Mr. and Mrs. Frank L.
Klapperich, Jr.

Mr. and Mrs. Norman A. Koglin
Gail and Barry Kohl

Mr. and Mrs. Alfred F. Kugel
William H. Kurtis^T and
Donna La Pietra

Mr. and Mrs. Michael P. Leahy
Deirdre LeMire
Mr. and Mrs. Alan Lerner

Laura Litten and
John Andre Leduc

Sarah Lovaglio
Scott Lowe and
Mary Martin-Lowe

MAC Restoration
Contracting, Inc.

R. Ernest Mahaffey and
Sheila A. Penrose

Dean Mamalakis and
Louise Mangos-Mamalakis

Michelle L. Maton and
Michael C. Schaeffer

Heidi and Gregory Mayer
Mr. and Mrs. James McClelland
Bess-Catherine and
James McCord

Mr. and Mrs. Ronald McKee
Mr. and Mrs. John A. McKenna
Bruce and Jane McLagan

Leslie Gantz McLamore
and Scott McLamore

Mr. and Mrs. Andrew McNally IV
Mrs. Hugo J. Melvoin

Mr. and Mrs. Michael Merfeld
Mr. and Mrs. William P. Meskan
Elizabeth Miller
Cynthia A. Moody

Mr. and Mrs. Carl E. Moore, Jr.
Mr. and Mrs. Gerald W. Moore
Mary K. Moreland and
Daniel T. Jenks

Anne M. Morgan^E
Harold M. and Adeline S.
Morrison Family Foundation

Mr. and Mrs. Michael H. Moskow
Helga E. Muench

Mrs. George V. Myers
Mary Nalbandian
Jossy and Ken Nebenzahl

Gary L. Neilson and
Trudy A. Havens

Mr. and Mrs. Jonathan B.
Newcomb

Mr. and Mrs. Ray E. Newton
Mary C. Niehaus and
Sanjeev Pandey

The Gerald Norton Foundation
Mr. and Mrs. Chris Olson

Mr. and Mrs. Norman Olson
Robert K. Parsons and
Victoria J. Herget

Mr. and Mrs. Homi B. Patel
Reverend Edgar Peara^D
Margaret M. Pendry

Aurie A. Pennick, Esq.^T
Bonnie S. Peters
Jose Prado and Rosa Acevedo

Mr. and Mrs. Albert E. Pyott
Mary F. Quednau

Mr. and Mrs. John R. Berry II
Ginevra Stirling Ranney^E and
Ben Ranney

Nancy and Warren Rasmussen
Mr. and Mrs. Stephen L. Ritchie
Mr. and Mrs. Steven A. Rosen

Mr. and Mrs. Richard M.
Rosenberg

Robert A. Rosholt and
Sharon L. Brunelle

Renee and Edward Ross
Foundation

H. Nelson Rowley III
William Rudnick and
Lisa Walker

Mr. and Mrs. Thomas D.
Rutherford

Saganaga Corporation
Sargent Family Foundation

Cynthia M. Scalzo and
Henry Brown

Kelley C. Schueler
Thelma L. Schwartz

Francine Scully-Lippitz and
Herbert Lippitz

Edward Seaton
David and Judith L. Sensibar
Mihra Seta

Tracey Shafroth and
Michael Elam

Mr. and Mrs. Jonathan Shaver
Bette H. Sikes and
Joan Pederson

Victoria M. Skala
Skidmore, Owings & Merrill LLP

Mr. and Mrs. Reuben Slone
Mr. and Mrs. Peter B. Smith
Mr. and Mrs. Scott C. Smith

Mr. and Mrs. Benjamin Smith-
Donald

Mr. and Mrs. Robert W. Smolen
Mr. and Mrs. Walter S. Snodell III
Solot and Karp Family
Foundation

Mr. and Mrs. Jeffrey Sommer
Mr. and Mrs. Scott E. Sommer
Tom Sourlis
Warren and Susan Spencer
Mr. and Mrs. Stanley Stasch

Jocelyn Stoller	Attorneys at Law
Usha Subramanian [‡] and Deepak Raghunathan	Robert Z. Aliber
Mr. and Mrs. Bert O. Sullivan, Jr.	Roberta R. Allen
Mr. and Mrs. Brian R. Sullivan	Mr. and Mrs. Richard J. Almeida
Mr. and Mrs. James E. Taich	Alex Alvarado and Ashley McKinney
Mr. and Mrs. Gregory T. Taylor	Kristine Anderson
Mr. and Mrs. Richard L. Thomas	Paul and Mary Anderson
Mr. and Mrs. Maurice R. Thompson	Richard Assmus and Leah Welty
Tiny Tiger Foundation, Inc.	Andrea Atlass
Michael M. Todd, MD and Linda Todd	Tony Augustine
Lawrence and Margaret Tomaszek-Witry	Mr. and Mrs. William Bach
Mr. and Mrs. Raymond C. Tower	Richard P. Bail and Janice G. Bail
Mr. and Mrs. Andrew Trees	Mary Baniak and Mike Baniak
Howard J. Trienens	Katherine M. Barnash
Mr. and Mrs. Richard Uihlein	Carlo Basile and Kim Basile
Union of Concerned Scientists	Beans & Bagels
Mr. and Mrs. J. V. Van Cura, Jr.	Mr. and Mrs. Eric Beaumont
Shawn K. VanDerziel [‡] and Jay Clarke	Mr. and Mrs. Brian D. Beggerow
Dr. and Mrs. Jeffery S. Vender	Mr. and Mrs. Francis Beidler III
Katherine Vennetti	Mr. and Mrs. Donald A. Belgrad
Mariah Vichich	Mr. and Mrs. Ronald J. Benedict
Leslie and John Wainwright	Tom Benson
Ernest P. Waud III	Gerilynn and Hal Berding
Julie C. Webb and Laura Christman	Matthew Berding
Jane Frances Wells and Burton C. Ferrini	Mr. and Mrs. Robert Berman
Sheila and Brian Whalen	Sarah Birmingham
Mr. and Mrs. Raymon Whitney	Lieselotte N. Betterman
David E. Willard	Mark Bettin
James L. Wilson and Pamela Diane Toler	Mr. and Mrs. Richard B. Black
Melanie R. Wojtulewicz and Tony Crowe	Kristin and Jay Scott Bleecker
Joseph Wolnski and Jane Christino	Mr. and Mrs. Philip D. Block IV
Elizabeth Yntema and Mark Ferguson	Nancy L. Bodeen
Kenneth A. Youga	Mr. and Mrs. Paul A. Bodine
Mr. and Mrs. Phillip C. Zarcone	Laura and Robert E. Boyd, III, MD
Mark H. Zornow, MD	Barbara A. Boyer
	James A. Brainer
	Mr. and Mrs. William Brauneis
	Linda and Michael Bresolin
	Mr. and Mrs. Robert Brightfelt
	Steven U. Brint
	Mr. and Mrs. K. D. Brooksher
	Judy and John Bross
	Mr. and Mrs. Steven L. Brown
	Mr. and Mrs. Thomas Buck
	Eileen M. Cahill and Family
	Judith A. Caloud

\$500 to \$999

Anonymous (7)
 Barbara and Steven Adelman
 Mrs. John J. Ahearne
 Alexander and Alexander

In Memory of Renee and Edward Ross

Renee and Edward Ross were true Chicago philanthropists. Married for 73 years before Renee's death in 2015, the couple was involved in supporting many Chicago institutions, including the Field Museum. Edward was a legend for his business acumen and dedicated service to the community. Through the Renee and Edward Ross Foundation, the couple provided a significant gift to the Field Museum after Edward passed away on February 19, 2017.

Drew A. Carhart	Amy T. Dickinson and Jim Futransky
Mr. and Mrs. Walter R. Carlson	Dr. and Mrs. John R. Dimar II
Mr. and Mrs. Robert E. Carroll	Mr. and Mrs. James S. DiMatteo
Mr. and Mrs. Frantz R. Cartright	Mr. and Mrs. John M. Dixon
Mr. and Mrs. Phillip Cathlina	Mr. and Mrs. Thomas W. Doddridge
Sheila Cawley and Stephen Kahnert	Mr. and Mrs. Keith A. Dorman
Mr. and Mrs. Wilfred P. Chapeau III	Mr. and Mrs. James Downey
Natali Chavez	Mr. and Mrs. Donald Driscoll
Chicago Ornithological Society	Andrea M. Dudek
Stephanie Chueh	Helen M. Dunlap
Sharon L. Cline and Robert W. Tatro	Elise and Theodore Dysart
Mr. and Mrs. Joseph Cofield II	Mr. and Mrs. Timothy K. Earle
Ray Colebaugh and Catherine Rogers	Paul W. Earle and Ellen Rudnick
Mr. and Mrs. Terrence Collins	Mark C. Egan and Katherine Z. Egan
Mr. and Mrs. John C. Colman	Mr. and Mrs. Thomas C. Eley III
Christine Coode and Brent Pace	Mr. and Mrs. Paul M. Embree
Edward J. Cooper	Mr. and Mrs. Albert J. Falasz
Christine Courtnage	Mr. and Mrs. John F. Faulhaber
William D. Cox, Jr.	Carl B. Fausey
Susan Craft	Frank S. Femali
Mr. and Mrs. Bruce Crown	Mr. and Mrs. Jose L. Ferrer
The Honorable Barbara Flynn Currie	Mr. and Mrs. Stephen Fettinger
Mr. and Mrs. John A. Daniels	Robert Fisher
Mr. and Mrs. Allen R. Davies	Sally Fletcher
Laura Marcussen Davis	Lewis Flint
Patricia R. Davis	Mr. and Mrs. Francis G. Foster, Jr.
Dana and Stan Day	Mr. and Mrs. Sadgio Fredianelli
Diana L. DeBoy	Gerald Freedman and Elizabeth Sacks
Nancy Dehmlow and Cameron Dunne	Mr. and Mrs. William J. Friend
Louis [‡] and Margarette Delgado	Gregory J. Gajda
Abigail Diaz [‡]	Mr. and Mrs. J. Patrick Gallagher, Jr.

Jeanne K. Gang and
Mark Schendel

Mrs. John S. Garvin

Melissa Genova Hill and Joel Hill

Mr. and Mrs. William A. Gifford, Jr.

Gretchen Gillis

Judy Girard

Chris Godell and Curt Ballard

Mr. and Mrs. William H. Gofen

Paula A. Golden

Joan Goldstein

Carolina Goncalves

Katherine Gory

Patricia A. Gowland

Dianna Grant-Burke, MD

Leila S. Green

Mr. and Mrs. Daniel R.
Greenberg

Dr. and Mrs. Daniel Grossman

Cornelia Grumman and
James Warren

Mr. and Mrs. John A. Hagenah

William M. Hales Foundation

Dr. and Mrs. George S.
Hallenbeck

Mr. and Mrs. Joel L. Handelman

Dr. and Mrs. Donald Harden

Mr. and Mrs. David S. Harrington

Katherine P. Harris

Mr. and Mrs. David C. Hawley

Joanne Heal

Joyce E. Heidemann

Mr. and Mrs. David J. Height

Mr. and Mrs. Scott E.
Hertenstein

Molly and Tim Heyen

Mr. and Mrs. Mark C. Hibbard

Mr. and Mrs. John W. Higgins

Melissa Hilton and
Jonathan Perman

Larry A. Hoellwarth and
Ann Shih-Hoellwarth

Mr. and Mrs. B. Peter Hofmann

Glenn Hopkins

Mr. and Mrs. Thomas Hopkins

Elizabeth A. Hopp-Peters and
Kurt T. Peters

Mr. and Mrs. David B. Horn

Nancy A. Horner

Rose Houston Charitable
Foundation

Mr. and Mrs. G. Cleveland
Hunt, Jr.

Rex M. Hunt

Mr. and Mrs. Leslie Ireland

Steve M. Isaac and Judy Olds

Mr. and Mrs. Glynn Isoda

Mr. and Mrs. Jeffrey W. Jackson

Mr. and Mrs. Andrew M. Jarosz

Carole Wood and Carl Jenkins

Judy Johanson

Mr. and Mrs. Jerald L. Johnson II

Robert Bruce Johnson and
Ann K. Eldred

Mr. and Mrs. Douglas L. Jones

Mr. and Mrs. Brian Jones

Eric and Cathy Jorgensen

Dr. and Mrs. Timothy Kamp

Kane County Chapter Illinois
Audubon Society

Mayer and Morris Kaplan
Family Foundation

Mary Kay Karzas and
Warren K. Reiss

Mr. and Mrs. William O. Kasten

Jamie Kelly^E

Katharine Kelly

Thomas and Margaret
Kittle-Kamp

Mr. and Mrs. Adam Klauber

Anne V. Klecka

Mr. and Mrs. Robert D. Kolar

Mr. and Mrs. Rasit Konuk

Stanley L. Korwin and
Nancy J. Hall

Natalie Kozlov

Mr. and Mrs. Lee V. Kremer

Paul R. Kressin and Kay Lee

Mr. and Mrs. James R. Krick

Mr. and Mrs. Michael J. Kuehl

Emerson and Martha Lacey

Ruth M. Larson

Winfred M. Leaf

Leslie A. Lee

Melissa K. Lee

Anita Lees and Lisa Lees

Glenn Lefkovitz

Mr. and Mrs. Sigmund Lefkovitz

Debbie Levitan

Jessica Levy

Charles Ashby Lewis

Dr. and Mrs. Michael S. Lewis

Mr. and Mrs. Donald J. Lewis

Mr. and Mrs. Robert E. Lindgren

Charles N. Lindsey and
Zikri Yusof

Mr. and Mrs. Bert H. Lindstrom

Amy and Vincent Liptak

Elyse Litwack

Mr. and Mrs. Mark A. Livengood

William and Suzanne Logan

Marie Lona and Brad Coolidge

Michelle Lozins

Judith L. Macior

Mr. and Mrs. Bernard A. Mack, Jr.

Victor S. Magar and
Deborah Oestreicher

Ann Maine and Barrett Wood

Nina Mann

Charlene Marcus

Mr. and Mrs. A'ndrea Marcyniuk

Arthur and Elaine Margulis

Carmen Maso

Mr. and Mrs. Richard P. Mayer

Mr. and Mrs. Raymond McBride

Mr. and Mrs. Mark J. McCarville

James McCormack and
Evelyn Zatkoff

Mr. and Mrs. Jeffrey R.
McDonald

Liz and John McEnaney

Mr. and Mrs. Alan G. McNally

Joyce Meggett

Steven A. Melnyk

Mr. and Mrs. Robert C. Merrick

Mr. and Mrs. Glenn E. Merritt

Anne L. Metcalf

Ken Metcalfe

Carol and Jan Miecznikowski

Mr. and Mrs. Michael E.
Mikolajczyk

Dr. and Mrs. Robert P. Miller

Miriam A. Mobley Smith and
Colin Smith

Perry Mocerì

Mr. and Mrs. Thomas M.
Monahan

Mr. and Mrs. Richard L. Moody

Thomas H. Moog

Mr. and Mrs. Rick Morimoto

Mr. and Mrs. John A. Morris

Maureen G. Mullally

Janet Murphy

Mr. and Mrs. Joseph Navarre

Suzu G. Neithercut

Mr. and Mrs. Neil C. Nelson

Gerald Newman

Marjorie and Christopher
Newman

Mr. and Mrs. Gary R. Nickels

Lora Nickels^E and
Thomas Tague

Leslie and Richard North

Mr. and Mrs. Ismael Nuñez

Richard H. O'Connell

Mr. and Mrs. Donald R. Oder

Sarah R. Packard

In Memory of Jan Miroslav Pencik

Born in Oak Park in 1938, Jan Pencik loved the Field Museum so much that, as a young child, his mother purchased a lifetime membership for him. Drawn to botany, particularly mushrooms, Jan frequented the Museum even after moving to Michigan as an adult. A stockbroker by profession, his love of nature caused him to include the Field Museum in his estate plans. Jan passed away on January 19, 2017, and the Field Museum received a bequest of over \$1 million. We honor the lifelong loyalty of our friend Jan Pencik.

Scott Pattullo and Jenny A. Johnson	Thomas and Ann Schultz	Mr. and Mrs. James Vallely	Anirudh Ajith
Mr. and Mrs. William B. Pearce	Dr. and Mrs. Peter F. Schultz	Mr. and Mrs. John F. Vicha	Judith A. Akers
Mr. and Mrs. Richard S. Pepper	Mr. and Mrs. Richard G. Schultz	Thomas W. Vogelsang and Kathleen M. Moran	Mr. and Mrs. Nathan Allen
Mr. and Mrs. David Perry	Mr. and Mrs. Stevan F. Schweighardt	Belle Waldfogel and Georgean Goldenberg	Mr. and Mrs. Thomas J. Allison
James W. Peters	Marilyn L. Schweitzer and Michael A. Firman	Marge Walls and Cassandra Sawyers	Tamara Samuels Almquist and Stephen Almquist
Katherine Philippe	Olivia J. Scully	Mr. and Mrs. Scot E. Warren	Marilynn Alsdorf
Mr. and Mrs. Thomas D. Philipsborn	Mr. and Mrs. Richard J. L. Senior / The Morgan Senior Foundation	Ann Wasoff	Michael Altman
Mr. and Mrs. Burt Pickard- Richardson	Mr. and Mrs. G. Curtiss Shaffer II	Mr. and Mrs. Ed Watkins	Maria Alvarez and Gloria Alvarez
Mr. and Mrs. Louis R. Pignotti, Sr.	Robert V. Sharp and Mary Ann Fischer	Sophia A. Watson	Susan and Roberto Alvarez
John Pinenti	Kate M. Sheehy	Carolyn M. White	Patricia Alvino and Nora Winsberg
Lisa Pinsley and Karim Kawakibi	Mr. and Mrs. Douglas L. Shuman	Bennie E. Whiten, Jr. and Susan E. Sporte	Mr. and Mrs. John R. Anderluh
Nancy Plax and Steven Schwartzman	Louis and Nellie Sieg Fund	Monica Wilkins	Bonnie J. Andersen
Lee B. Price	Ilene Simmons	Lynda Williams, PhD and Norman J. Williams	Mr. and Mrs. Arthur H. Anderson, Jr.
Mr. and Mrs. John B. Priest	Mr. and Mrs. Michael Simpson	April R. Wilson	Mr. and Mrs. Craig A. Anderson
Justin Priestman	Caroline and Jeffrey Skender	Mr. and Mrs. Gary Wilson	Mr. and Mrs. Edward Anderson
Michael Prussian and Carolyn Meyer	Maureen M. Slavin	Robert F. Wisniewski	Mr. and Mrs. Jonathan Anderson
Helene and Norman X. Raidl	Mr. and Mrs. Randy Smith	Carl Wolf and Jennie Sochon	Joshua Anderson
Dr. and Mrs. Mark A. Ratner	Larry and Maxine Snider	Mr. and Mrs. Terrence Woods	Mr. and Mrs. Greg P. Anderson
Timothy W. Raykovich and Donna Vega	Mr. and Mrs. John B. Snyder	Nancy G. Wulfers	Thomas Anderson
Merle Reskin	Keith Solomon and Elana Beckerman	Alon Yonaton	Kimberly Angland and Melissa Angland
Richard W. Richardson and Heather Archer	Michelle Sotak	Ray G. Young	Cheryl Aponte ^E
Mr. and Mrs. Donald E. Rocab	Lindsey Soukup	Owen and Linda Youngman	Ruth Archer and Jim Helke
Janice E. Rodgers	Donald Southworth and Marilyn Cantisano	Mr. and Mrs. Hugh Zentmyer	Mim Ari and James St. Clair
Jeanette Rodriguez ^E	Laura Speck and Kimberley Speck	Mr. and Mrs. Bruce Ziegle	Mr. and Mrs. Joshua Arlow
Marilyn Rohn	Leon and Cynthia Stecher	Mr. and Mrs. William B. Zigterman	Mr. and Mrs. Bruce T. Armstrong
Howard J. Romanek and Irwin Romanek	Mr. and Mrs. Richard Steinken	\$250 to \$499	Dorsey Armstrong and Paul Schneider
Mr. and Mrs. Harry B. Rosenberg	Mr. and Mrs. John A. Stepan	Anonymous (20)	Dee Jae Arnett and Riley Arnett
Michael and Madeline Rosenberg	James and Pamela Stola	Charlotte D. Abarbanell	Mr. and Mrs. Fernando Arriola
Rosenson Foundation	Lynn and Wayne Svoboda	Danielle Abboud and Michelle Abboud	Kaye B. Aurigemma
Mr. and Mrs. Robert J. Ross	Mr. and Mrs. Blake H. Swift	Mr. and Mrs. Brian Abrams	Mr. and Mrs. John S. Babowice
Mrs. Donald I. Roth ^D	Dr. and Mrs. Joseph W. Szokol	Gabriel Acinapura and Elizabeth Dyer	Mr. and Mrs. Troy Badali
Mrs. Stephen W. Rothermel	Mr. and Mrs. J. Hall Taylor	Roger S. Adamek	Lana Bailey
Donald Rowden	Mitch Theys	Anthony Adams and Kara Breems	Dr. and Mrs. Alfred L. Baker
Sheldon B. Rubin	Christine Tierney and Jeff Jordt	Cyrus H. Adams	Mr. and Mrs. Clyde N. Baker, Jr.
George and Kathleen Rummel	Beverly J. Timm	Gina Adduci	Sarah Baker
Norman L. Sandfield	Mr. and Mrs. Ben Tombaugh	Mr. and Mrs. David L. Ader	Mr. and Mrs. John T. Baldwin
Nancy A. Sans	Sally L. TreKell	Mr. and Mrs. William T. Adkerson	Alina and David Balko
Mr. and Mrs. John T. Schaff	Mr. and Mrs. John P. Tubutis	Susan S. Adler	Sarah and Adam Ballard
Dr. and Mrs. Morton O. Schapiro	Mr. and Mrs. Dominic P. Turchi	Julieta Aguilera and Andrew Johnson	Michael Barbalic and Maureen O'Donnell
Suzanne and Ken Schulte	Dr. and Mrs. Richard Tye		Frances Barrett
	Peter M. Vale		Susan Barrett and Jonathan Sweeney
	Mrs. Murray J. Vale		Susan Barriball and Charles Barriball

Jean McKee Barry
Robert and Susan Barsy
Mr. and Mrs. Sean Barus
Alben F. & Clara G. Bates Foundation
Douglas D. Baum and Lynne M. Wait
Mr. and Mrs. Michael H. Bauschelt
Mr. and Mrs. Kenneth J. Bazarnik
William T. Beck and Doreine Carson
Michael J. Becker
Reverend and Mrs. William C. Beckmann
John A. Becque, Jr. and Gail L. Sullivan
Mr. and Mrs. William Bedford
Mr. and Mrs. Jeffrey Beech
Dirk Beekman and Rebecca Delahayne
Nancy Behrendt and Carl B. Pedigo
Mr. and Mrs. Stephen E. Benefiel
Benevity Community Impact Fund
George and Ellen Benson
Mr. and Mrs. Robert A. Benziger
Dr. and Mrs. Michael Bercek
Mr. and Mrs. Matthew Berean
Dr. and Mrs. Leonard Berlin
Martha Bermingham
Mr. and Mrs. Robert Bernot
Harriet K. Bernstein
Lawrence Bernstein
Lynn Besser
Mr. and Mrs. Robert Best
Mr. and Mrs. Adrian D. Beverly
Mr. and Mrs. Sam Bianco
William E. Bible
Lois J. Bider
Henry and Leigh Bienen
Polly Bingham-Kawalek
Michael Bishop and Vonora Bishop
John Bistolfo
Kay A. Bjork
James Blanchet
Mr. and Mrs. John Blaser

Jan Blok and Laura Melcher
Mr. and Mrs. James P. Bloom
Mr. and Mrs. Irwin A. Blumensadt, Jr.
Georgia Bockos
Mr. and Mrs. Erwin F. Bogs
Therese M. Bogs and W. Haser
Mr. and Mrs. George Bohling
Mr. and Mrs. Matthew J. Boler
Mr. and Mrs. Thomas C. Boltik
Alexandria Bond
Mr. and Mrs. David Bonenfant
Richard and Jolanta Boniak
Clarisa Bonilla
Mr. and Mrs. Charles S. Boone
Mr. and Mrs. Jason Booth
Mr. and Mrs. Laurence O. Booth
Jennifer Bose
Mrs. Edward S. Bottum
Mena and David Boulanger
Dr. and Mrs. Aldridge K. Bousfield
Dr. and Mrs. Bruce H. Boyer
Mr. and Mrs. Dennis E. Bozych
Dr. and Mrs. David Bradley
Maria Brandon and Randy Burrow
Tim^E and Julie Bratley
Marie E. Brelin
Mr. and Mrs. David Brewer
Charles T. Brockmann
Lynn Bromstedt
Rhen-Elyse and Matthew Brosseau
Mr. and Mrs. Daniel J. Brown
Mr. and Mrs. William Browne
Sharon Brown-Haynes
Mr. and Mrs. Frank Bruno
Mr. and Mrs. Jackson Brunsting
Mr. and Mrs. Wallace P. Bryant
Mr. and Mrs. Joshua T. Buchman
Stephen J. and Susan P. Buck
Ann M. Buckley
Thomas M. Buess
Mr. and Mrs. Werner Buol
Mr. and Mrs. Daniel Burns
Timothy J. Burroughs and Barbara Smith
Mr. and Mrs. Robert Burrows

Mrs. Clark Burrus
Mr. and Mrs. Michael Busch
Christine and David Buvinger
Frances Cahill and Cynthia Cahill
Steven M. Cain
Kimberly Caldwell
Edward Calkins
Eugene Callen
Colin Campbell and Monica Lauren Hunt
Mr. and Mrs. Michael S. Canmann
Mr. and Mrs. Gerrod Capps
Roxanne Capron
Mr. and Mrs. Thomas M. Carmazzi
Mr. and Mrs. Joseph M. Carroll
Sarah and Steve Carter
Mr. and Mrs. Steven C. Carter
Daniel Castro and Jeannine Camic
Elizabeth A. Cerny
Karen Chambers
Mr. and Mrs. David S. Chan
Sitara Chandra and Anita Chandra
Tammy and Brian Chapas
Mr. and Mrs. Danny Chapman
Mr. and Mrs. Walter Chase
Mr. and Mrs. Paul S. Chatalas
Sophia Chau
Susan and Tom Chemler
Joan S. Cherry and John R. Cara
Anna Cheuvront
Thomas Chin and Cheryl Yuen
Gay-Young Cho and Yu-Lam Christopher Chiu, MD
Mr. and Mrs. James N. Chodora
Mr. and Mrs. Paul Choi
Mr. and Mrs. John A. Chojnicki
Emily J. B. Christian
Roger and Marion Christoph
Marylinn Chrystal and Sarah Chrystal
Michelle Clairmont
Mr. and Mrs. Dave E. Clark
Marcus Clark and Lorrie Elliott
Mr. and Mrs. Randall Clark
Dr. and Mrs. Robert D. Clark
Mr. and Mrs. Steven L. Clark

Diane D. Clarke
Mr. and Mrs. Albert C. Claus
Benjamin A. Coats
Mr. and Mrs. Martin J. Cohen
Mr. and Mrs. Eric Cohen
William S. Cohen
Mr. and Mrs. Stanley Cohn
Mr. and Mrs. Michael P. Cole
Sharon P. Cole
Mr. and Mrs. Nicholas Coletta
Jonathan Colledge and Susan Duma
James and Andrea Collingwood
Dr. and Mrs. Roosevelt D. Collins
Joan M. Colmar
Mr. and Mrs. Vito Colucci
Pamela Conant
Joan Conger and Julia Conger
Mr. and Mrs. Matthew Connelly
Gladys E. Connolly
Michael Connolly
William Connor
Lorraine M. Conroy
Edmond Constantinescu
Mark D. Contratto
Laura Cook and Gabriel Morton-Cook
Mr. and Mrs. John W. Cooper
Mr. and Mrs. Gordon Coppoc
Wyatt Cornett and Mark Cornett
Gerald Corrigan
Mathew A. Cotton
Cynthia D. Cox and Robert Cox
Mr. and Mrs. Thomas W. Coyle
Michael Cozza
Sue and Kyle Cragg
Dolores E. Cross, PhD
Susan M. Crowell and Kathleen Cooke
Mr. and Mrs. Lester Crown
Minerva Cruz
Yvonne M. Curbis
Dr. and Mrs. Arthur W. Curtis, MD
John E. Cwenkala and Lorraine Brochu
Gail Dallas
Mr. and Mrs. James M. Daly II
Mr. and Mrs. John M. Damas
Mr. and Mrs. Alfred E. D'Ancona II

Jackie and Donald R. Dann	Mr. and Mrs. Joseph E. Doninger	Fertile Ltd.	Mr. and Mrs. William Georgis
Mr. and Mrs. Bruce Davidson	Susanna and W. Gregory Doolin	Mr. and Mrs. Robert H. Fesmire	Shelly Geppert and Rose Latuszek
Kent and Susanne Davis	Mr. and Mrs. Richard Doonan	Fred C. Fettingner	Mr. and Mrs. Isak V. Gerson
Matthew M. Davis and Lakshmi Halasyamani	George D. Driggers	Mr. and Mrs. Conrad T. Fialkowski	Mr. and Mrs. Douglas Geyer
Mr. and Mrs. Dennis De Bruler	Mr. and Mrs. Joseph H. Drummond	Mr. and Mrs. Sanford Finkel	Mr. and Mrs. George K. Gill
Pierre De Smul and Carol De Smul	Patricia J. Dryer	Mr. and Mrs. Duncan G. Fisher	Peter Ginn
Bruce Dean	Teresa Dube	Mr. and Mrs. John Fitterer	Mr. and Mrs. Carl Giometti
Mrs. Howard M. Dean, Jr.	Michael S. Dublak and Sharon M. Authier	Mr. and Mrs. James G. Fitzgerald	Paris Glazer
Mr. and Mrs. Mark D. Deaton	Mr. and Mrs. Robert Duffy	Jennifer Fitzgerald and Amy Fitzgerald	Mr. and Mrs. John Gleason
Mr. and Mrs. Rocco J. deGrasse	Diana L. Duncan ^E	Mr. and Mrs. Peter L. Flemister	Mr. and Mrs. Patrick Gleason
Carla M. Dehmlow	Mr. and Mrs. Stephen P. Durchslag	Geoffrey A. Flick	Paula Glitman and Doug Stone
Robin A. Delapena ^E and Dani Nichols	Anne O. Earle	Delia Flores	Richard Gnaedinger
Judith A. DeLeon	Glenna R. Eaves and Christopher J. Boebel	Christina and Philip Flores	Mr. and Mrs. David B. Golder
Mr. and Mrs. Charles Dennehy, Jr.	Martin Eckstein and Carol Bernstein-Eckstein	Ashley Floyd and Derrick Manuel	Rabbi Douglas H. Goldhamer and Peggy L. Bagley
George and Kathy Derkovitz	Diane S. Edlefson and Phil Harler	Martha and James Foght	Mr. and Mrs. Jerry Goldman
Doris Devine	The Robert G. Eiserman Family	Mr. and Mrs. William D. Folland	Mary Golf and Ann Golf
William Dewoskin and Wendy S. Gross	Dave Elderkin and Nicholas Day	David C. Follmer and Anita Samen	Mr. and Mrs. Edward Gong
Mr. and Mrs. Philip Diamond	J. Thomas Eller	Kimanne Foraker-Koons and Ronald Koons	Abimael Gonzalez and Uber Lopez
Mr. and Mrs. Giancarlo Dibonaventi	Mary Ellen and Tomy Endo	Liam T.A. Ford and Ann R. Weiler	Mr. and Mrs. Gene M. Gooding
Mr. and Mrs. Blair C. Dickinson	Mr. and Mrs. Wayne Eng	Evelyn Forstadt	Gary Gordon and Marilyn B. Hirsch
Leonora Dickson	Mr. and Mrs. Dan Engel	Elizabeth Foster	Mr. and Mrs. Andrew Gore
Lisa Diehlmann and William Deakin	George Engelin	Jason Franken and Tracy Barrett	Eve M. Gorman
Mr. and Mrs. William Dietz	Michelle and Carl England	Mr. and Mrs. William D. Franz	Mr. and Mrs. Numa R. Gottardi-Littell
Mr. and Mrs. William Differding	Gary Eppling	Mr. and Mrs. Earl J. Frederick	Robert Gourley
Patricia Ann Dihel and Glen Wilson	Patricia M. Erickson	Stephen and Barbara Fredman	Patricia and Daniel Govert
William and Mary Ann Dilla	Karen Ernst	Paul and Susan Freehling	Terry Grace and Judith Gaietto-Grace
Ellen J. Dillon	Mr. and Mrs. Ronald L. Eshleman	Mr. and Mrs. John F. Freund	Mr. and Mrs. Craig Graff
Mr. and Mrs. Terry Dillon	Jose Espiritu	Susan H. Friedman and Neil R. Friedman	Glenn Graham
William D. Dini	Sharon and Peter Exley	David Fry and Whitney Morris	Sharon Graham and Terry W. McGuire
Anthony DiSanto	Diana H. Fagan	Kim and Robert Fugiel	Karen L. Granda and John S. Mrowiec
Mr. and Mrs. Paul F. Dittmann	Mr. and Mrs. Thomas Fahrenbach	Mrs. Wm. T. Kirk, Jr.	Lance Grande, PhD ^E
Mr. and Mrs. John Dixon	Harry R. Fair III and Carolyn E. Jordan	Eleanore Funk	Ryan A. Grande and Demitria Dimopolous
Joshua Dlouhy	Mr. and Mrs. Frank Falbo	Mr. and Mrs. John Gage	Mindy Graser and Heather Lecher
Kevin Dockery and Kelly Reynolds	Mr. and Mrs. James Fanuzzi	Thomas F. Gajewski and Marisa Alegre	Mr. and Mrs. Elisha Gray III
Julie A. Dodds and William G. Humphrey	Tiffany Farriss	Mr. and Mrs. Roger Gansauer	James C. Green
Mr. and Mrs. David W. Dodson	Julie A. Federico and Alton Jay Mitchell	Angela Garavuso	John and Mary Greenwald
Mr. and Mrs. Philip B. Doherty	Dr. and Mrs. Balbino B. Fernandez	Martha A. Garcia	Mr. and Mrs. Mark J. Greenwood
Leonard and Patricia Dominguez	Mr. and Mrs. Matthew D. Anderson	Charles Gardner	Noel R. and Michael Grego
Lissa Domoracki		Jeff Gardner and Elizabeth Groothuis	Ann and Alan Grelyak
Mr. and Mrs. John Donato		Jamie Garzas and Cole Casas	Catherine A. Griffin
		Hildegard H. Geiger	Mr. and Mrs. Robert M. Grimm
		Lauren Geiss	
		Julie L. Gentes	

John F. Grobe	Farah Hatia and Yasir Sabri	Mel and Mary Jo Howard	Mr. and Mrs. Roderic Johnson
Ed Gross	Mr. and Mrs. Martin F. Hauselman	Mr. and Mrs. Toney Howell	Stacy L. Johnson
Caitlin and Edward Grossestreuer	Mr. and Mrs. Allan Hausfeld	Mr. and Mrs. Michael Hu	Timothy Johnson and Frieden Johnson
Ada Mary Gugenheim and Jon N. Will	Thomas Hawkins	Mr. and Mrs. David Hubbard	Mr. and Mrs. Ian Johnston
Anjali Gurnani	Mr. and Mrs. Franklin D. Hayes	Dr. and Mrs. Michael S. Huckman	Jaclyn M. Johnston ^E
Jennifer Guskey	Andrew Hazard and Laura Callahan-Hazard	Mr. and Mrs. Frederick J. Hug, Jr.	Lin Johnston
Dr. and Mrs. John W. Gustaitis, Jr.	Mr. and Mrs. David Hazels	Charles J. Hughes	Mr. and Mrs. Robert A. Jones, Jr.
Charlotte Guyett	Lawrence R. Heaney, PhD ^E	Jeri Sue Hughes and Sarah Hughes	Arthur P. Jordan and Diana Pappas Jordan
Mr. and Mrs. Dean L. Haas	Lawrence Heck	Pat Hughes and Brigid Hughes	Richard W. Josd
Robert A. Habermann	Bette Heide and Avis Lucas	Mr. and Mrs. Phillip D. Hulben	David R. Joseph
Mr. and Mrs. Mervin D. Hagen	James S. Heim	David L. Hulse	Mr. and Mrs. Paul R. Judy
Kati and John Hagenbuch	Mr. and Mrs. Jason Heinrich	Robin Humbert	Timothy Kaczocha and Kim Holmes
Dianne S. Haines and Julie Davis	Christine and Jim Helgert	Mr. and Mrs. David C. Humphrey	Judith Kadish ^D
Tara Hale	Clarence Helm and Stephanie Shaw	Diane S. Humphrey	Anna Kahrman
Eladia Halili	Frederick and Karen Henderson	Janice Humphrey	Jill M. Kainu and Michael LaBuda
Holley Hall	Mr. and Mrs. John Henderson	Mr. and Mrs. Jeffrey L. Hunt	Srinivas Kakumani and Seetal Kakumani
Cathleen and John Halliburton	Mr. and Mrs. Frank X. Henke III	Roger J. Hymen and Monika Cohen, MD	Kathleen G. Kallan
Mr. and Mrs. Joseph P. Hamilton	Karen J. Hennessy	Mr. and Mrs. Thomas Hysell	Sona Kalousdian and Ira D. Lawrence
Michael Hammerman	Susanne Henning and Robert Henning	Mr. and Mrs. Corey Iles	Mr. and Mrs. Fredrick Kamil
Mr. and Mrs. Thomas Hammerman	Mr. and Mrs. Paul M. Herkes	Cheryl Istvan and Keith Daubenspeck	Mr. and Mrs. Arnold Kanter
Mr. and Mrs. M. Hill Hammock	Mr. and Mrs. Jeffery S. Heydanek	Mr. and Mrs. Roland L. Jabotte	Lily Kanter
Mr. and Mrs. Michael S. Hammond	Andrew Heymann	Judith M. Jackson and Dannielle G. Jackson	Dr. and Mrs. George C. Karkazis
Paul Hamper	Mr. and Mrs. William Hicks	Julianne Jackson and Rob Pileckis	Jamie Karoff
Mr. and Mrs. John S. Hand	Daniel P. Hidding	Marilyn Jackson	Mr. and Mrs. John A. Karoly
Chester S. Handelman and Phyllis Handelman	Mr. and Mrs. Harlow N. Higinbotham	Mr. and Mrs. Todd G. Jackson	Joseph Kartheiser and Katie Blasius
Mr. and Mrs. Kenneth S. Handmaker	Mr. and Mrs. Andrew Hill	Mr. and Mrs. Robert A. Jahnke	Mr. and Mrs. Byron C. Karzas
Larry L. Hanes	Mrs. Edward M. Hines	Adam E. Jakus	Mr. and Mrs. John S. Kasang
Esther R. Hankin	Mr. and Mrs. Joseph Hinkel	Mr. and Mrs. Paul A. James	Verla Kasmerchak
Richard Hanks and Libia Gil	Austin L. and Beth M. Hirsch	Mr. and Mrs. Timothy Janowick	Jodi Kim Kastner
Joseph R. Hanley and Kristy L. Mardis	Cynthia and Michael Hirsch	Janice A. Jarnholm	Michelle Kaysen
Robert Hanlon and Barbara MacDowall	Mr. and Mrs. Richard M. Hirsch	Catherine A. Jaselskis and Gary G. Alberts	Ginger and Kevin Kearney
Kim and Dan Hare	Donald W. Hitzeman	Barbara B. Javaras	Mr. and Mrs. Michael G. Keck
Mr. and Mrs. Kevin Hargis	Kathleen Hoban	Rose Mary Jelinek	Mary Jane Keitel ^E and Mark J. Bouman, PhD ^E
Patricia A. Harper	Mr. and Mrs. James M. Hohner	Mr. and Mrs. Garrett Jenks	Lisa and Ryan Kell
Scott Harris and Howard Harris	Edward and Jo Ann Holba	Mr. and Mrs. William R. Jentes	Ellen and James Kelleher
Zena Leah Harris, MD and David Gius, MD	Craig J. Holderness	Mr. and Mrs. Jose L. Jimenez	William C. Kelly, Jr.
Alison Hasbargen	Nancy Holland	Carl W. Johnson and Laura M. Bloom-Johnson	Barbara Kenar-Schilling
Howard A. Hast and JoAnn Olsen	Mr. and Mrs. Dean T. Honda	Christopher Johnson	Mr. and Mrs. Terrence Kennedy
Mr. and Mrs. Edward D. Hatcher	Honeywell International	Mr. and Mrs. W. Bruce Johnson	Hannah Keogh
	Mr. and Mrs. Joel D. Honigberg	Lloyd Johnson	Mr. and Mrs. Paul Kepes
	Thomas A. Hootman and Pamela J. Sisler	Mr. and Mrs. Rich Johnson	Susan B. Kern and Alex Yamron
	Mr. and Mrs. Thomas J. Hope	Richard Johnson	Kate T. Kestnbaum
	Madeline C. Houser		

Robert and Patricia Kilinskis	Brian Lee Kruse and Alyson Koblas	Andrew Lewis and Nicole Kazee	Cynthia Mark-Hummel and John Hummel
Byoung Sug Kim and Eun Ko	Gregory Kuhn	Michael Lewis	Mr. and Mrs. John B. Markovic
Theodore Kim and Jessica Alessi	Mr. and Mrs. David Kulieke	Mr. and Mrs. Robert Libka	Mr. and Mrs. David Markovitz
Stephanie Kimmel ^E and Mike Conroy	Jennifer Kunkel and Brook Enhelder	Gilbert Lichstein and Ruth Czarnecki-Lichstein	Peter Marks and Dorothy Mackevich Marks
James and Diana King	Mr. and Mrs. Walter W. Kurczewski	Elizabeth Lidd Factor and Laiah Factor	Mr. and Mrs. Dan Marks
Jenny and John Kinsella	Nicole Kwiatek and Katie Kwiatek	Joseph Like	Judith Marth
Mr. and Mrs. James R. Kirk	Lynne La Jone and Chris Mollet	Mr. and Mrs. Edward Lin	Mark Martin
Mr. and Mrs. Harreld Kirkpatrick III	Mr. and Mrs. Mark R. Laatsch	Josephine and Daniel Lisowski	Todd and Erika Martin
Keith Kleehammer and Cheryl Sweeney	Dr. and Mrs. Richard J. Labotka	Marcia Liss and Jenna O'Del	Ana I. Martinez and Noel De Leon
Dr. and Mrs. Thornton C. Kline, Jr.	Paige LaCour	Paul Littlejohn and Sara George	Marco L. and Susan Martinez
Edward T. Klunk	Deborah M. Lader and Michael L. Silver	Mr. and Mrs. Chuanbo Liu	Mr. and Mrs. John Martini
Judith L. Knie	Felicia LaGioia	Mr. and Mrs. William F. Lloyd	Mr. and Mrs. John Massey
Jessica Knierim and R. J. Lindsay	Mr. and Mrs. Lester M. Lampert	Thomas E. Lofgren and Sarah Anne Lofgren	Dr. and Mrs. Walter E. Massey
Ricardo Knight and Wanda Grant	Michael Landau	Dr. and Mrs. Eugene B. Loftin	Mr. and Mrs. James R. Mather
Robert P. Knight	Mr. and Mrs. Dirk B. Landis	Michael Lonero and Joan Toland	Mr. and Mrs. Alan Matsumura
Timothy B. Knuth and Elizabeth Tate	Craig Landon	Robert Long and Ruth Knight-Long	Mr. and Mrs. Charles R. Matthews
Ray H. Kocher	Dana Langtiw	Sherry and Melvin Lopata	Mr. and Mrs. Wesley D. Matthews
Thomas Koelbl and Margaret M. Forbes	Albert F. Ettinger and Susan Lannin	Mr. and Mrs. Gregory Lopez	Julie L. Mattson and Richard A. Mattson
Mr. and Mrs. Melvin J. Koenigs	Christine J. Laperuto and William J. Roznowski	Barbara Mankus Louthan	David Mausner and Gale Zemel
Mr. and Mrs. Shohei Koide	Mr. and Mrs. Charles W. Larsen	Dr. Spomenka M. Luedi and Hans Luedi	Charles Mauter
Mr. and Mrs. John E. Koliopoulos	Mr. and Mrs. Eric Larson	Dr. and Mrs. Louis P. Lukancic	Juan Mayen and Nicole Prosecky
Mr. and Mrs. Steve Kolodziej	Michelle D. Layman	Pamela A. Lunsman and Kelly Englum	Mr. and Mrs. Henry H. Maze
Becky Koman	Mr. and Mrs. David C. Lazar	Jane and Steve Lupton	Dr. and Mrs. Lloyd A. McCarthy
Mr. and Mrs. Joseph A. Kosinski	Cathy G. Lazaroff	John R. Lurain and Nell S. Lurain	Mr. and Mrs. William W. McKeever, Jr.
Mr. and Mrs. Kelly Kost	Mr. and Mrs. Jay M. Leaman	Mr. and Mrs. Gregory Lynch	Mr. and Mrs. Scott McBride
Risha Kotecha	Adam R. Leber and Danielle Desjardins	Mr. and Mrs. Robert W. Lynch	Casey McCarthy
Mr. and Mrs. Mithilesh Kotwal	Aaron Lebovitz and Donna Myers	Allan Maca	Marilyn McClory
Mr. and Mrs. Glenn A. Kowalski	Emily and Stephen Lee	Mr. and Mrs. Laird Macdonald	Stuart A. McCrary and Nancy L. Davis
Mark F. Kozloff and Gale M. Kozloff	William M. Lee, Jr.	William and Lenore L. Macdonald	Kevin C. McDonald and Judy A. Chan
Regina Krakowski	Joshua Lemon	Mr. and Mrs. Craig A. Mackrides	Sherry L. McFall and Kenneth J. Porrello
Mr. and Mrs. Theodore J. Krakowski	Lisa and Anthony Leniski	Carol A. Macola and Nicholas Macola	Bob McGee and Elizabeth Ciccolini
Chris Kratz	Mr. and Mrs. Kurt A. Lentsch	Mr. and Mrs. Steve Magenta	Jim McGrath
Mari Beth and Michael Krause	Glenn Leonard and Mary Anne Daher Leonard	Richard D. Malone	Mr. and Mrs. G. Thomas McKane
Michael Kraynak	Mr. and Mrs. Vincenzo O. Leone	Diane and James Maloney	Mr. and Mrs. Lester H. McKeever, Jr.
Jennifer M. Krejci	Michael A. Leppen	Alexandra Margo Malos	John and Amy McKeough
Mr. and Mrs. Paul K. Krickl	Jack Lerman and Elise Pike Lerman	Mr. and Mrs. Martyn L. Mantynband	Mr. and Mrs. John S. Meany, Jr.
Mr. and Mrs. Jeffrey A. Kriezelman	Barry Lesht and Kay Schichtel	Mr. and Mrs. Ira Marcus	Terry J. Medhurst
Mr. and Mrs. Brian E. Krob	MSgt. and Mrs. Gary L. Lessenberry	Nicole Mardos and Danielle Yonker	
Mr. and Mrs. Larry S. Krucoff	Mr. and Mrs. John G. Levi	Dr. and Mrs. Lawrence N. Margolies	
Dona Krug	Mr. and Mrs. Kenneth C. Lewin		
Juliann Krupa			

Mr. and Mrs. John Medio	Mr. and Mrs. Edward C. Murawski	Dorothy Jeanne Oakley	Frederic C. Pearson
Tamiye Meehan	Marisa Murillo and Mathilda Murillo	Mr. and Mrs. Michael O'Brien	Mr. and Mrs. Antonio Pedraza, Jr.
Mr. and Mrs. John Meehl	Mr. and Mrs. James G. Murphy	Junell O'Donnell	Pete Pelletier
John M. Meeks	Mr. and Mrs. J. B. Murphy	Mr. and Mrs. Emmett O'Hara	Michael Peninger and Pamela Crandall
Mr. and Mrs. James R. Meindl	Mr. and Mrs. James Murray	John R. Oliphant	Mr. and Mrs. Frank Pensiero
Joan and Jeff Mercuri	Linda Rae Murray and Susan Avila	Marie E. Olsofka	Mr. and Mrs. Ray J. Pensinger
Alan Mesh and Bonnie Podoloski	William Murray and Susan Cahill	Brian Olson	PepsiCo, Inc.
Mr. and Mrs. Laurens J. Mets	Ruth J. Muyskens and Philip Postlewaite	Tod A. Olson and Julie Stauffer	Mr. and Mrs. Mathias Perdekamp
Beverly M. Meyer	Mr. and Mrs. James W. Myers	Neil and Katherine O'Mahony	Robert Peretti and Quaylin Peretti
Robert C. Michaelson	Dr. and Mrs. Charles F. Nadler	Mr. and Mrs. Rick Oppermann	Kay Perez and Corey Fratus
Laurel and Michael Mielke	Dr. and Mrs. Jonathon H. Nadler	Mike Oren	Abigail Perkins and Philip Perkins
Mr. and Mrs. Chad Miller	Mr. and Mrs. Jerry A. Nagles	Mr. and Mrs. Robert W. Orr	Mr. and Mrs. Mark Peters
Catherine Miller and Greg Gunderson	Mr. and Mrs. Ron B. Nahser	Mr. and Mrs. Baltimore F. Ortega	Mr. and Mrs. Michael F. Petersen
Catherine E. Miller	Christopher Narburgh	Mr. and Mrs. James O'Shea	Mr. and Mrs. Daniel B. Peterson
Mr. and Mrs. Daniel Miller	Cynthia and Nolan Narut	Mr. and Mrs. Alan Oshita	David Peterson
Jaclyn C. Miller	Mr. and Mrs. Mohammed Naser	Mr. and Mrs. Dennis V. Osimitz	Verne Peterson and Julie Lipkin
Robert J. Miller and Jill K. Goldberg	Kenneth Nassau	Laura Osmanski	Mr. and Mrs. Matthew Petterson
Thomas Miller	James Naughton and Anita Andren	Mr. and Mrs. James J. O'Sullivan, Jr.	Mr. and Mrs. Christopher F. Pfaff
Vernon A. Miller and Kathryn Tecza	Regina and Serjio Navejar	Christine Ott	Mr. and Mrs. Jeffrey Pfluger
James C. Mills and Lois S. Zoller	Mrs. Earl L. Neal	David Otto and Marianne Wojak	Elizabeth B. Phillips
Michael E. Moats and Kathy Moats	Mr. and Mrs. Robert J. Nelson	Mr. and Mrs. Shannon Owens	Judith R. Phillips
Mark Monaghan and John Monaghan	Mr. and Mrs. Joseph Nemec	Mr. and Mrs. Charles Paape	Susan I. Phillips ^E
Matthew B. and Sherry L. Monesmith	Lisa Nemeroff	Mr. and Mrs. M. J. Padorr	Nella Piccolin
Jose Dennis A. Monteverde	Robert E. Nerius and Mary McNaughton	Ronna J. Page	Mr. and Mrs. James E. Piechowski
Mr. and Mrs. Eugene F. Moore	Jack Netter	Mr. and Mrs. Raymond Paice	Mr. and Mrs. Edmund Piehler
Mr. and Mrs. David Moore	Anne Newbold	Bruce Palmer and Fabienne Palmer	Mr. and Mrs. Robert G. Pierce
Jim and Diane Moore	Mady Newfield and Rob Plunkett	Mr. and Mrs. Thomas Palmer	Mr. and Mrs. Robert L. Pierce
Mr. and Mrs. Kenneth D. Moore	Katherine Newhouse	Donald Panovich and Celia Panovich	Mr. and Mrs. Michael R. Pinsky
Mr. and Mrs. Leon W. Moore	Robert C. Newman	Eric Nielsen and Ellen Papacek	Mr. and Mrs. Joseph Pisoni
Brittany Morgan	Karen Nickelson	Mr. and Mrs. Michael S. Parenoff	Mr. and Mrs. Walter J. Plank
Diana and Graeme Morgan	Gail Niemann and Douglas Farr	Elissa Park and John Quigley	Mr. and Mrs. Charles J. Plasil
Mr. and Mrs. David D. Morimoto	Jill Niland	Eleanor Parker	Joseph and Mary Plauche
George G. Morrison	Anya Niroalai and Nicholas Yogerst	Elaine and Frank Parker	Mr. and Mrs. Andrew Plautz
Sabrina R. Morton	Alice Niziolek and Kathy Curran	Robert and Catherine Parks	Mr. and Mrs. Charles F. Pleier
Vijai K. Moses and Raj Lartius	Raymond L. Noftsgger and Tina Forchetti	Wayne T. Parman and Jana O'Brien	Peter W. Plumley and Anna M. Rappaport
Barbara Mudloff	Erin and Patrick Nolan	Stanley Parzen and Lynne Raimondo	Joshua and Jennifer Poje
Mr. and Mrs. Kurt M. Mueller	Mr. and Mrs. Philip Nolan	Kimberly and Richard Patrick	Mr. and Mrs. Jay Pollitt
Clara Mueller	Linda Nolten	Jim and Chris Patterson	Mr. and Mrs. Oren T. Pollock
Mr. and Mrs. Stephen Mueller	June A. Novalich and Helene Novalich	Lois M. Pausch	Sylvia Klajs-Ponnezhan and Vijai Ponnezhan
Mr. and Mrs. David Mui		Monica Pawelec and Eva O'Brien	Mr. and Mrs. Avner Porat
John Mulford		David J. Peace and Karen Ferrer	William P. G. Potocek
Mr. and Mrs. Michael Mullane		Richard and Celeste Peake	Charles A. Pounian, PhD
Hector and Zina Munoz		Mr. and Mrs. Jerry K. Pearlman	

Manushag Powell and Derek Pacheco	Dennis and Elizabeth Riordan	Peter F. Saunders and Patricia J. Larson	Vivian Sheffield
Mr. and Mrs. John W. Prange	Maureen L. Riordan	Fred Savaglio and Ann E. Meininger-Savaglio	Mr. and Mrs. Matthew Sheldon
Mr. and Mrs. Michael Prapuolenis	Abigail L. Ristow [£]	Meredith and David Schacht	Marjorie Shelley and Thomas Omer
Mr. and Mrs. Michael Prentice	Kristen Rivers and Leanne Rivers	Alice D. Schaff	Mr. and Mrs. Charles Shenk
Terese Preston	Chauncey H. Robinson	Mr. and Mrs. Terry G. Schechner, DDS	Timothy C. Sherck
Dr. and Mrs. Richard A. Prinz	Mr. and Mrs. David E. Robinson	Mr. and Mrs. David M. Schiffman	Mr. and Mrs. Brian Sherman
Ciara Proctor	Mr. and Mrs. Timothy M. Rockhill	David L. Schlotterback	James V. Shipp and Nancy Marie Casper
Mr. and Mrs. Shelby Pruett	Mr. and Mrs. Ismael Rodriguez	Susan D. Schlough and Andrew D. Abbott, PhD	Michelle Shlimon
Doris J. Puntney	Yvette Rodriguez	Robert Schmadeke	Dasha Shor
Mr. and Mrs. John F. Pustola	Elissa Rodriguez-Hadac and Jocelyn Rodriguez	Alin Schmidt	Mr. and Mrs. William Shorey
Mr. and Mrs. Jeff Quast	Ron G. Rohde	Beth [†] and Marc Schmidt	Mr. and Mrs. Duward F. Shriver
Mary Quigg	Julie Ann Roin and Saul Levmore	Tina Schmidt	Ruby Siddiqui
Mr. and Mrs. Robert K. Quinn	Edgar Rojas	Mr. and Mrs. Stephen Schmitt	Daniel Siegel
Shanna Quinn	Mr. and Mrs. Robert Rolih	Mr. and Mrs. Eric R. Schnadig	Mr. and Mrs. Dillan Siegler
The Quint Family	Mr. and Mrs. Benjamin Rooks	Michael J. Schneider	Mr. and Mrs. Alan H. Silberman
Nyrmin Quintero and Angel Altieri	Patricia Rooney	Dr. and Mrs. G. Stephen Scholly	Natalie and Michael Silerzo
John and Camellia Radzinski	Mr. and Mrs. Theodore Rosean	Richard Schreiner	Mr. and Mrs. David Silke
Katherine Raff	Mr. and Mrs. Morton Rosen	Alan Schriesheim, PhD	Mr. and Mrs. Alejandro Silva, Jr.
Israel Ramirez and Karla Rachwalski	Dr. and Mrs. Neil Rosenberg	Mr. and Mrs. Paul W. Schroeder	Mr. and Mrs. Salvador Silva
Dorothy Victoria Ramm	Mr. and Mrs. Bernhard Rosenstein	David L. Schultz	Mr. and Mrs. Daniel H. Silverstein
Ruth G. Ramsey, MD and Michael M. Ramsey, MD	Mr. and Mrs. Dan Rosenthal	Mr. and Mrs. Karl Schultz	Todd Simec
Mr. and Mrs. Craig Randall	Warner A. Rosenthal	Susan and Charles P. Schwartz	Cecelia Simmons and Leontine Clark
Catherine A. Randolph	Brian Roska and Ellen Roska	Robert F. Schwartz	Junie L. Sinson
Victoria Post Ranney and George A. Ranney, Jr.	Vivian L. Ross and Sandy Silver	Ronald and Jane Schwuchow	Carol B. Skala
Dr. and Mrs. James Read	Mr. and Mrs. Ken Rotter	Eileen V. Schwuchow- Wehrheim and Thomas Wehrheim	Margaret Skrmetti and Jerel Bangayan
Jenna Reed	Phillip D. Rowe	Ryan Scofield and Krista McKim	Daniel Slattery and Ellen Mrazek
Mr. and Mrs. Mark E. Reeves	Debran Rowland and Luke Hanley	Shauna Scott and Kerry Hall	Mr. and Mrs. Thomas L. Slattery
Mrs. Clyde W. Reighard	Kathryn J. Rubel	Emily Searcy and Rebecca Lingo	Mr. and Mrs. Mitchell L. Slotnick
William J. Reinke	Lynn M. Rubino	David Segal	Arden and Charles Small, Jr.
Mark S. Reiter and Kathleen A. Ward	Roberta F. Rudnick	Rhys Seiffe	Mr. and Mrs. Edward Byron Smith, Jr.
Colleen and Charles Remsberg	Catherine Rudolph	Mr. and Mrs. T. Dwaine Sell	Janna and Fred Smith
Sigrida Renigers and Astra M. Patrick	Mr. [†] and Mrs. Jesse H. Ruiz, Esq.	Mr. and Mrs. James Senjanin	Mr. and Mrs. Stephen Smith
Garth Renne	Jacqueline Sadler	Mr. and Mrs. James Setzer	Therese G. Smith
Marquee Reno and Jay Neander	Frank and Joan Safford	Kal Shah and Deepti Singh	Ian Smithdahl and Stephanie Wagner
Nanci Repala and Violet Goodheart	Christina M. Sakowski	Mr. and Mrs. Connor B. Shaw III	Geraldine Smrcina
Mr. and Mrs. John D. Reppy	Patrick J. Salem and Mary T. Cherian	Damian Shaw	Peggy Snorf
Raiselle C. Resnick and Kenneth I. Resnick	Dr. and Mrs. Edwin C. Salter	Mr. and Mrs. John A. Shaw	Cheryl and Shane Solheim
Mr. and Mrs. Michael Richards	Paul and Bettylu Saltzman	Paul Sheehan and Andrea Ernest	Mr. and Mrs. Matthew Sons
Mr. and Mrs. Jerald F. Richman	Christine A. Salvator	Mr. and Mrs. Neil J. Sheehan	Kelly Soprych and Karen Soprych
Patricia A. Riley	Jack Santarsiero		Mr. and Mrs. Roberto Soriaga
	Coletta Sargent		Robyn Sotak
	Mr. and Mrs. Milan Saric		David Spadafora

Christopher Spanel	Kenneth Swiatkowski and Valerie Schoen	Mr. and Mrs. William Trost	Don Waller and Caitlyn Allan
Norman F. Spielman	J. Roger Swihart	Mary Trowbridge and William West	Ronald J. Wallin and Whitney A. Parker
Mr. and Mrs. Donald E. Sporleder	Judith Szach	Marla J. Tucker	Jessie and Brian Walsh
Mr. and Mrs. Eric Spratford	Dr. and Mrs. Jan P. Szidon	Kerry Tulson and Kevin LaVoy	Marquis Wang
Mr. and Mrs. Randy Springer	Brian Tang	Mary Beth and Joseph Turek	Ralph L. Wanger, Jr. and Monique Clarine
Sarah D. Sprowl	Gayle Taylor	Scott F. Turow and Adriane Glazier Turow	Kathleen Ward and Patrick Kelly
Gloria Stachnik	Steven F. Tempel and Deborah Zekich	Norma and J.J. Uhran	Therese L. Wareham
David and Ingrid Stalle	Nicholas K. Terrell	Mr. and Mrs. Enrique J. Unanue	Mr. and Mrs. Kurt L. Warning
Mr. and Mrs. James Stanczak	Troy Terry	Eric Urbanski	Mr. and Mrs. Daniel Warren
Sharon and Nils Stangenes	Mr. and Mrs. Richard J. Thennes	Jill and David Uswajesdakul	Laura S. Washington [†] and Michael William Richmond
Emily and Stephen Stanley	Kanjana Thepboriruk	Elsa Vaintzettel and Louise Larsen	Ludwig Wasik and Caitlin Rawlins
Eric Staswick	Walter F. Thiele	Michael Valitchka and Jessica Morris	Elaine D. Wayne
Mr. and Mrs. Steven Stefani	Kathryn S. Tholin and Steven K. Starr	Mr. and Mrs. Robert C. Vallone	Stanley Wearden and Deborah Davis
Mr. and Mrs. Kurt J. Steib	Carolyn M. Thomas and Patti Thomas	Mr. and Mrs. Gerald Van Kollenburg	Leonard L. Weber
Mr. and Mrs. Richard A. Steinke	David Thomas	Mr. and Mrs. Jack Van Orden	Mr. and Mrs. Andrew J. Weddig
Mr. and Mrs. Phillip L. Stern	Mr. and Mrs. Nick Thomas	John D. Van Pelt and Sharon M. Quintenz	David Weible
Mr. and Mrs. Michael J. Stock	Richard and Aurea Thomas	Melody A. Van Wermeskerken	Richard and Karen Weiland
Mr. and Mrs. Howard L. Stocker	Mr. and Mrs. Robert W. Thomas	John M. VanderLinden and John Wm. Butler, Jr.	Claire Ann Weimann
Harriet C. Stone	Robert L. Thompson	Dr. and Mrs. Peter O. Vandervoort	Dianne Weinand
Maura and Daniel Stout	Valerie Thorp-Rosenberg and Robert Rosenberg	Mr. and Mrs. Nicholas Van Holsbeke	Mr. and Mrs. Gerald A. Weiner
Robin and Jim Straus	Gregory and Gretchen Tieder	Christine E. Varela and Angela Varela	Susan Weiner
Mr. and Mrs. Donald Strauss	Dr. and Mrs. David C. Tiemeier	Mr. and Mrs. Joseph Vargo	Mary Jo E. Weis
Gary L. Strawn	Barbara Tighe	Donna Vaughan	Mr. and Mrs. Jerome S. Weiskopf
James R. Streicker and Mary W. Stowell	Anna Timmons	Fernando Velazquez	Mary Weisman and James Weisman
Mr. and Mrs. John J. Streit	Margaret B. Tinzmann and Otto Tinzmann	Daniel P. Venske	Gene J. Weiss, MD
Lisa and Kevin Stringer	Katherine E. Tisdahl and Pat Hughes	Mr. and Mrs. Leonard M. VerVers	Joanne Weitzel
Mr. and Mrs. Theodore A. Struve	Juliet and Eastman Tiu	Mr. and Mrs. Randolph M. Videkovich	Mr. and Mrs. Paul Wells
William Sturch	Diane Marie Tkach and James Freundt	Guacolda Reyes and Hector Vielma	Joan Werhane and Jill Werhane
Mr. and Mrs. Glen C. Suda	Poh Toe and Wei Sun	Mr. and Mrs. James R. Vieregg	Randy and Emily Wexler
David Sundquist and Terri Schultz	Virginia Tolk	Daniela Viera	Dr. and Mrs. Samuel S. Wexler, DDS
Sian Sutcliffe and Sean Taylor	Mr. and Mrs. Alvin V. Tollestrup	Paul Von Hoff	Willard E. White
Mr. and Mrs. George Sutherland	Mr. and Mrs. Wm. Ronald Tomecko	Matthew J. von Konrat [‡] and Genea Pitts	Mr. and Mrs. Marlon Whiteeagle
Mr. and Mrs. Harold Sutton, Jr.	Caitlin Townsend	Mary Wadleigh	Mr. and Mrs. Casey Whitmire
Mr. and Mrs. Mark Sutton	Mr. and Mrs. Gregory Tracey	Dr. and Mrs. Albert F. Wagner	Laura A. Wilber
Hobart K. and Janis F. Swan	Mr. and Mrs. James M. Trapp	Shmuel and Eliyahu Wahli	Fiona and Steve Wilcher
Mr. and Mrs. Edwin L. Swanson	Mr. and Mrs. Carl Traynor	Rosa E. Walke	Chris Williams and Holly Newhouse
Nathan Swanson	Dana Shepard Treister and Dr. Michael Roy Treister	Mr. and Mrs. Herschel D. Wallace III	Darnell Williams [‡] and Gene Smothers
Mr. and Mrs. David W. Swartz	Mr. and Mrs. Barton G. Tretheway		Dr. and Mrs. David B. Williams
Loretta B. Sweeney			Elaine Williams
Patrick Sweeney and Sharon Brown-Sweeney			
Mr. and Mrs. Steven G. Sweetser			
Mr. and Mrs. Barry Swenson			

Megan K. Williams^E
 Nancy and Robert Williams
 Christine and Geoffrey Williamson
 Mrs. Robert H. Wilson
 Scott R. Wilson and Phylis Ellis
 Mr. and Mrs. Timothy R. Wilson
 Mr. and Mrs. O'Donnell Winchester
 Kelvin Wing
 Mr. and Mrs. James R. Wise
 Anna Wojcik
 Mr. and Mrs. Jason Wojno
 Kathleen M. Wolfersberger and Cheryl Wolfersberger
 Dorothy H. Wolff and Eric S. Wolff
 Edmund J. Wolff
 Grace Wong and Andrew Warren
 Mr. and Mrs. Zachary Worshill
 Patricia A. Worth
 Randall Wosilus
 David and Kay Wulf
 George F. Wunder and Carol E. Mattes
 Min Xiao
 Mr. and Mrs. Brian Yamaguchi
 Rosalind Yang and Eric Bowden
 Megan Synenki Yea and Richard Yae
 Nancy Ying
 Hana Yoo
 Janice C. Young
 Richard F. Young
 Mr. and Mrs. Solomon Yudeloviteh
 Denis M. Zamirowski
 William F. Zandrew
 Tina M. Zekich
 Claudio Zeledon Guzman and Rachel Belair
 Mr. and Mrs. Brian Ziebart
 John and Linda Zimnie
 Mr. and Mrs. Earl Zingraf
 Mr. and Mrs. Edward J. Zulkey

The Edward E. Ayer Society

The Edward E. Ayer Society recognizes donors who remember the Field Museum through bequests, trusts and other planned or life income gifts.

Anonymous (23)
 Barbara and Steven Adelman
 Marilyn Alsdorf
 Mary Jane Arnam
 Donald and Betts Baepler Endowment for Ornithological Study
 Mr. and Mrs. James H. Banach
 Randolph and Lorraine Barba
 Mr. and Mrs. Robert D. Becker
 Helen R. Beiser, MD
 Susan M. Benton^T
 Ruth and Robert^D Berns
 Christopher Boebel and Glenna Eaves
 Willard L.^T and Susan K. Boyd
 Richard T. Brannegan
 Frederick W. Brooke III
 Mrs. George R. Brumlik
 Leo R. Buckert
 Judith A. Caloud
 Thomas and Dianne Campbell
 Rita and John^T Canning
 Clarissa H. and Henry T.^D Chandler
 Neil M. Chisholm
 Josephine Chyatte
 Mr.^T and Mrs. Worley H. Clark, Jr.
 Mr. and Mrs. William D. Coates
 Mr. and Mrs. Stephen F. Condren
 Mr.^D and Mrs. Frank W. Considine
 Mark Crane
 Rebecca Davidson
 Cheryl and Michael Del Campo
 Janet W. Diederichs

Gary and Candace Drimmer
 La and Philip Engel
 Fabio Fabbri
 Carl B. Fausey
 Mary and Bruce Feay
 Suzette Feher
 Dr. and Mrs. Curtis B. Frank
 Penny and John E. Freund
 Wilbur^T and Linda Gantz
 William E. and Helene^D Gardner
 Lyle Gillman
 Georgean Goldenberg
 Robert and Beth Gordon
 Norman C. Greenberg and Gilda M. Greenberg
 Evelyn R. Greene^D
 Timothy and Joyce Greening
 Mr.^T and Mrs. Lewis S. Gruber
 Tonja Rizai Hall
 Jeanne M. Hansen^D
 Betty S. Hess^D
 David D. Hiller^T
 John and Marjorie Hines
 Mary P. Hines
 Peggy L. Hoberg
 Anita and James Hornbrook
 Mrs. Arlys R. Hunt
 Datin Tan Fui Lian and Datuk Dr. Robert F. Inger
 Edward Jerkey
 Stacy L. Johnson
 Mr. and Mrs. Robert A. Jones, Jr.
 Kathleen and Alex Kallend
 Mr. and Mrs.^T Dennis J. Keller
 Mr. and Mrs. Jerry M. Kelly
 Richard^{TE} and Jan Lariviere
 Fay and Daniel Levin
 Robert E. Lewis, PhD^D
 Gail J. and Robert B.^T Loveman
 Mr. and Mrs. Bernard A. Mack, Jr.
 Ann C. Mallow
 Marie Spinozzi Marotta
 Nancy A. McDaniel
 William B. McDonald and Ptah Sekhmat Osiris
 Erma S. Medgyesy

Robert and Lois Moeller
 Anthony G. Montag, MD and Katherine L. Griem, MD
 Anne M. Morgan^E
 Sandra L. Mueller
 James and Sandra Napolitan
 John P. Nielsen
 Karen A. Nordquist
 John R. O'Connell^E
 Irma Parker
 Dr. and Mrs. William R. Parkhurst
 Joseph and Jo Ann Paszczyk
 Marie E. Peruscini and Edward C. Bapple
 Susanne Petersson and Daniel Rozkuszka
 Mr. and Mrs. Richard J. Pigott
 Mrs. John W. Pocock^D
 Julia Potter
 Mr. and Mrs. Mane Pritza
 Mrs. Alfred Lunt Putnam
 John R. Rahn and Patricia E. Rahn
 Dominick S. Renga
 Alan Resetar^E and Donna Resetar
 Richard F. Reynolds
 Sheila T. Reynolds^D
 Anita J. Rogers
 Mr. and Mrs. Benjamin Rooks
 John W.^T and Jeanne M. Rowe
 David L. Schlotterback
 Douglas M. Schmidt
 Franklin R. Schmidt
 Patricia O. Schnadig
 Thelma L. Schwartz
 Monica and Stephen Sentoff
 Mr. and Mrs. G. Curtiss Shaffer II
 Bob and Charlene Shaw
 David Shayne
 Louise M. Sherman
 Joanne Silver
 Adele S. Simmons^T
 Rebecca Gray Smith
 Gabriela and Scott Sparacio
 Duane E. and Christine M. Stout
 Steven Strohmeier^E and Josie Brown
 Judith B. Sugarman

Lawrence and Margaret
Tomaszek-Witry

Gerald M. Torrence

Linda J. Volino

Rose and Robert Wagner

David A. Wargowski

Drs. Johannes and
Julia R. Weertman

Nestor R. Weigand, Jr.

Dianne M. Weinand

Barbara H. West^o

Claudia L. Winkler

Barbara A. Wolf

James G. Young

Mr. and Mrs. William B.
Zigterman

Christine C. Zogus

2017 Estates & Bequests

The Field Museum
recognizes the following
individuals for their
bequests, legacies,
and estate gifts

Anonymous (2)

Ricardo M. Basch

Mrs. Robert Adams Carr

Henry T. Chandler

Rose Marie Craig

Mrs. Joseph N. Field

Dr. Evelyn Frank

Betty S. Hess

Susan D. Hoyne

Florence J. Mikowski

Reverend Edgar Peara

Helen J. Petersen

Betty D. Prout

Rose L. Shure

Jane B. and Chester D. Tripp

Nancy L. Wald

Lawrence G. Wilcox

2017 Matching Gift Companies

The following companies
generously matched gifts
from their employees,
retirees, or directors
in supporting the Field
Museum in 2017.

Anonymous

Aetna

Apache Corporation

ArcelorMittal

AT&T Inc.

BP America Inc.

Caterpillar, Inc.

CME Group Foundation

ExxonMobil Foundation

The Field Foundation of Illinois

GCM Grosvenor

GE Foundation

Goldman, Sachs & Co.

W.W. Grainger, Inc.

IBM

Ilex Corporation

ITW

Johnson Controls, Inc.

Masco Corporation

Robert R. McCormick
Foundation

Northern Trust

The Pfizer Foundation, Inc.

Quarles & Brady, LLP

RLI Employee Matching
Gift Program

William Blair & Company

2017 Gifts In-Kind

Herb Alpert and Lani Hall Alpert

Beam Suntory

Susan M. Benton[†] / Butler
Rubin Saltarelli & Boyd LLP

Chicago Blackhawks
Foundation

Chicago Cubs

Drinker Biddle & Reath LLP

Free Spirit Media

Mr. and Mrs. Richard Guzik

United Airlines

Volunteer Leadership

WOMEN'S BOARD EXECUTIVE COMMITTEE

The Women's Board
promotes the Field
Museum's scientific
programs, exhibitions,
and educational outreach.
Members facilitate
philanthropic activities
to provide essential
unrestricted and
restricted support.

Susan Clark McBride
President

Susan Faurot
Vice President

Christine Ott
Vice President

Kelli Klauber
Secretary

Megan Hoffman
Treasurer

Peggy Bodine
Member at Large

Sarah Taich
Member at Large

Susu Block
Member Engagement Co-Chair

Barbara Brown
Annual Appeal Co-Chair

Barb Brown
Field Dreams Co-Chair

Beth Crownover
Education Advisor (ex-officio)

Amy Findlay
Member Engagement Co-Chair

Karen Gray-Krehbiel
2017 Gala Chair

Beth Glass
Field Dreams Co-Chair

Donna Greenberg
*2017 Women in Science
Luncheon Co-Chair*

Beth Kauffman
Outreach Initiative Co-Chair

Kathleen Klaeser
Immediate Past President

Connie Magnuson
Membership Co-Chair

Deanne McLean
*2017 Women in Science
Luncheon Co-Chair*

Corrie Moreau
Science Advisor (ex-officio)

Amanda Rutledge
Membership Co-Chair

Allison Schmitt
Annual Appeal Co-Chair

Patricia Schnadig
Women in Science Chair

Liz Sharp
Annual Appeal Co-Chair

Kim White
Nominating Chair

Lynda Williams
Outreach Initiative Co-Chair

PRESIDENT'S LEADERSHIP COUNCIL EXECUTIVE COMMITTEE

The President's Leadership
Council is an auxiliary group
of established professionals
with an interest in civic and
philanthropic activity.

Members support
Museum initiatives through
expertise-based volunteer
work and utilize their
personal and professional
networks to raise the
profile of the institution.

Ryan Ruskin[†]
Chair



The Women's Board

The Women's Board hosted the Museum's annual fundraising gala on Saturday, October 21, 2017 as an opening celebration for *Ancient Mediterranean: Cultures in Contact*. The gala—which included a cocktail reception, pop-up performances, dinner, and dancing—was chaired by Karen Gray-Krehbiel, past Women's Board President. Trustee Wilbur H. Gantz III was honored with the *Marshall Field V Award for Distinguished Leadership*, in recognition of many years of exemplary service and philanthropy. The event raised more than \$2.2 million for Museum operations and was attended by more than 550 guests.

Women's Board fundraising impacts many areas of the museum from unrestricted support through the Gala and Women's Board Annual Appeal, to project-specific giving from Women's Board members and their families, and contributions to Field Museum scientists through the Field Dreams program. The Women's Board's annual Women in Science Luncheon continues to grow, underwriting internships, graduate fellowships, and—new in 2018—post-doctoral positions at the museum. The Women's Board is making progress toward its campaign pledge of \$2 million to establish the Women's Board Youth Engagement Endowment, strengthening the Museum's education outreach and programs for Chicago youth. The Field Museum is grateful to the Women's Board for 52 years of generosity and leadership!



At the annual gala, the Women's Board recognized Trustee Bill Gantz with the *Marshall Field V Award for Distinguished Leadership*.

FIELD ASSOCIATES EXECUTIVE COMMITTEE

The Field Associates are committed to engaging young professionals through dynamic networking and leadership opportunities, unique programs, meaningful service, and fundraising to support scientific discovery and public education.

Beth Schmidt^T
President (2017)

Ryan VanHolsbeke^T
President (2018)

Jeff Skender
Vice President

Michelle Sotak
Treasurer

Aniz Ruda
Secretary

Matt Berding
EVOLVE

Paul Butler Diaz
Programming

Anna Cheuvront
Programming

Samantha Dietz
Membership

Jennifer Guskey
Development

Joseph Hernandez
Membership

Casey McCarthy
Communications

Lindsay Soukup
EVOLVE

Caitlin Townsend
Communications

ANTHROPOLOGY ALLIANCE

The Anthropology Alliance promotes interest in and support of the Field Museum's anthropological research and collections.

Susan Mikalauskis
Chair

Joyce Chelberg

Aimee Genova

Melissa Genova Hill

Morris Goodman

Joyce Greening

Misty Gruber

Patti Malloy

Jim Stola

Sheila Whalen

Carl Wolf

Field Museum Volunteers

Field Museum volunteers contribute their time and skills to advance the Museum's mission. Behind-the-scenes and in public exhibitions, volunteers support Museum staff and visitors alike.

500+ HOURS

Irene Broede

Drew Carhart

John DeWerd

Michael Ferrer

Christine Frazer

Peter Gayford

Gayle Guzik

Richard Guzik

Bernice Jacobs

Janis Lariviere

Peter Lowther

Joann Martinec

Jeffrey Schroder

William Sherry

Kurt Zahnle

Elaine Zeiger

Steven Zitowsky

200 to 499 HOURS

Eric Ahlgren

Stephen Anderson

Robert Andresen

Thomas Anton

Jan Marie Aramini

John Balaban

Mery Elyn Baron-Pocius

Janice Bell Kaye

Anthony Bellos

Sharon Benjamin

Betty Bergstrom

Richard Bloomfield

Robert Boswell

Theresa Boswell

Christopher Brink

Alan Brookes

Robert Cantu

Mary Jo Cappitelli

William Carroll

Robert Case

Ellis Caspary

Snehal Chavda

Carole Cotter

Edward Coughlin

Pam Coughlin

Coleman Czajkowski

Harpreet Datt

Philip Dittmann

Bill DuBois

John Dunn

Thomas Durica

Lauren Fitts

William Franz

Glenn Gabanski

Gerard Gagne

Andrew Gallardo

Renee Goddijn

Ann Grelyak

Jonathan Hane

Mary Harland

Mattie Harris

Beverly Harris

Joyce Hecht

John Hill

Mary Pat Hofer

Jeff Hoswell

Norene Jamieson

Madeline Jenkins

Judy Johanson

Gregory Johnson

James Kase

Nancy Kaufmann

Mary Ann Khan

Elzbieta Kolano

Sandra Kramer

Conor Langs

Joanne Levy

Kenneth Manchen

Etta McKenna

Lettie McSpadden

Susan Monge

John Morris

David Nanberg

Megan Nolte

Karen Nordquist

Marie Orendach

Frederick Orendach

Mildred Osgood

Mane Pritza

Anita Punkay

Loran Recchia

Theresa Regan

Susan Reinke

Judith Rom

Michael Roth

Esther Schechter

John Schmadeke

Annette Schmit

Karen Sharpe

Elizabeth Simmons

Terri Sinnott

Robert Somrek

Beth Spencer

Robert Spieler

Marc Stackler

James Stola

Donna Stone

Ali Sultan

Wayne Svoboda

Jeffery Taugner

Rebecca Taylor

Thomas Tervanis

Rose Tibayan

Amanda Turner

Jesse Tzeng

Darren Vilmin

Kristen Wacker

Phyllis Walden

Jacoba Ward

Tabitha Willis

Sarah Wisniewski

Huini Wu

William Zandrew

Howard Zar



In Memory of Richard Gray

The Field Museum noted the passing in 2018 of one of its singular contributors: Richard Gray. As an art dealer and founder of The Richard Gray Gallery, he was admired for his eye and his intellect. Richard offered the Field expert advice as the Museum pursued the largest, most complete *Tyrannosaurus rex* fossil in the world—SUE. On October 4, 1997, amid the drama of Sotheby's live auction, it was Richard Gray who guided the Field's winning bid. Richard took as much pride in bringing SUE to the Field as the Museum does sharing this treasure with the world. Richard and his wife, Mary, are counted among the most generous supporters of many of Chicago's cultural and educational institutions.

Commemorative Gifts

The following donors made gifts to the Field Museum in the name of a friend or loved one.

IN HONOR OF

Bob Andersen and Elaine Quinn

Mr. and Mrs. Neil Broesch

Andy, Casey, and Nora Baltensperger

Kathryn Baltensperger^E and Matthew Fredrickson

John Bates^E

Patricia M. Erickson
Mr. and Mrs. Arnold Kanter
Michael Lewis

Judith S. Block^T

Virginia and Gary Gerst

Mr.^T and Mrs. Norman R. Bobins

Mr. and Mrs. Alan G. McNally

Lisa and Tell Coffey

Carol Norcross

Conserve Chicago

James and Alexia Vanek

Jim W. Croft

Anonymous

Cupcake the Dinosaur

Laura Baugh

Deanna D. Desmond^E

Shannon Doyle

Susan Faurot

Mr. and Mrs. David S. Dudzinski
Gail Niemann and Douglas Farr

Kevin A. Feldheim^E

Eileen Feldheim

Ann Flossi

Mr. and Mrs. Albert E. Frank

Wilbur H. Gantz III^T

Paul W. Earle and Ellen Rudnick
Margaret Gantz
Beverly Joutas

Robert Myers

Catherine Peponis

Rose Gergerich

Garth Gergerich

The Glass Family

Mr. and Mrs. George A. Lorenz

Kathleen C. Golembiewski^E

Noah Cruickshank^E

Emily L. Graslie^E

Matthew Bernier
Christopher Davis
Kinsey M. Jackson
Rose Nelson

Kathryn Lynn Harris^E

Alanna Nissen

Dorothy D. Hawley

Mr. and Mrs. William A. Obenshain

Lawrence R. Heaney, PhD^E

Karen H. Laner

Andy Hershberger^E

Sian Sutcliffe and Sean Taylor

Eddie Joe Holley

Thomas and Ann Schultz

Robert F. Inger

Sophie and Jon Twichell

Charles L. Katzenmeyer^E

Anonymous
Patrick M. Madden
Richard D. Malone

Stephanie L. Kimmel^E

William Essig and Karen Essig

Deborah Kolden

Leia B. Ui Dhalaigh^E

Jan and Richard W.^{TE} Lariviere

Elise and Theodore Dysart
Tracy LaQuey Parker
Larry and Maxine Snider

Gail J. and Robert M.^T Loveman

Anonymous (3)

Katie Lux

Nicole Nutter

Crystal A. Maier^E

Gretchen Gillis

Erin Meyer^E

Clarmarie Keenan

Susan M. Neill^E

Bob Ericson

Dr. Ngo and Mr. Horton

Stephanie Kimmel^E and Mike Conroy

Carter O'Brien^E

Albert F. Ettinger and Susan Lannin

Ginevra Stirling Ranney^E

William Rudnick and Lisa Walker

Vicky Sanchez^E

Marilyn Jackson
Jennifer Masengarb
Gemma Mulvihill

Jessica P. Sarowitz^T

Your Foundation Staff

John C. Schmadeke

Robert Schmadeke

Patricia Schnadig

Adrian R. Foster
Mr. and Mrs. Eric R. Schnadig

Liz Sharp^T

Arthur and Elaine Margulis

Carmen Shepard

James H. Niehoff and Jolie R. Macier

Squirrel McNastyface

Samantha Hakemian

Usha Subramanian^E

Charles L. Katzenmeyer^E
Lisa Notter

SUE

Gail Edington
Carl Hannah
Kate Maude
Bridget O'Brien
Cheryl Smyth
Nancy Vosnidou

Robert H. Telfer^E

Carolyn Byerly-Dean

Lily Thomas

Mr. and Mrs. Tom Kingsbury

Kimberly White

Lynn Bromstedt

Vida Carolina Wren Sanchez

Michael Wren^E

IN MEMORY OF

Lucia Barba

Anonymous

M. Dolores Moyado

Thelma L. Schwartz

Mr. and Mrs. Tom Sholeen

Mr. and Mrs. Duane E. Stout

Adrienne L. Szulczynski

Christopher Buchen

Ellen S. Buchen

Richard Buchen

Steve Burger

Amy Radlinsky

Patricia B. Couch

The Couch Family Foundation

Blanche Grady Cross

Judith Cross

Frank Dickman and Zenia Miarecki

Mr. and Mrs. Paris Koulogeorgas

Carolynne Flint

Lewis Flint

Clarence E. Foster

Elizabeth Foster

Jack W. Fuller

Anonymous

Bobolink Foundation

Elliot H. Brown

Professor^T and Lady Peter R. Crane

Winnie and Bob^T Crawford

Janet W. Diederichs

Mr. and Mrs. Philip B. Doherty

Mary W. Graham

In Memory of Robert H. Malott

The Field Museum was greatly saddened by the passing of Robert H. (Bob) Malott on April 4, 2018. He was the former CEO and Chairman of FMC Corporation and a highly engaged leader in Chicago's cultural and civic spheres. Bob and his wife, Ibby, in whose memory the *Malott Hall of Jades* is named, had a passion for the natural world and the stories of people from all cultures. The Museum is very grateful for Bob's friendship and straightforward counsel; for Ibby's dedication to the Field; and for the enduring philanthropy of the Malott family for more than 45 years.



Cornelia Grumman and James Warren
David D. Hiller^T
Mr.^T and Mrs. James S. Frank
Charles L. Katzenmeyer^E
Mary Jane Keitel^E and Mark J. Bouman, PhD^E
Mr. and Mrs.^T Dennis J. Keller
William C. Kelly, Jr.
Lewis-Sebring Family Foundation
Seth Lipsky
Madigan Family Foundation
Mr. and Mrs. Alan J. Magerkurth
Mr.^T and Mrs. John W. McCarter, Jr.
Robert R. McCormick Foundation
Clare Muñana^T
Mr. and Mrs. James O'Shea
Nigel C. Pitman^E and Maria Renata Pereira Leite
Victoria Post Ranney and George A. Ranney, Jr.
Ginevra Stirling Ranney^E and Ben Ranney
Mary Anne Rogers^E
Jeanne M. and John W.^T Rowe
Edward Seaton
Tracey Shafroth and Michael Elam
Mr. and Mrs. Scott C. Smith
David Spadafora
Warren and Susan Spencer
Mr. and Mrs. Stanley Stasch
Sophie and Jon Twichell
Alaka Wali, PhD^E
Nancy Hamill Winter
Mr. and Mrs. Douglas P. Woodlock
Owen and Linda Youngman

Patricia Georgouses
Thomas Crowley
Patricia Grogan
Gary Giannoni
Mr. and Mrs. Kevin R. Gallagher
Mr. and Mrs. Lothar Nowag
Jill Postma
Mr. and Mrs. Hugh R. Worsham
M. Warner Green, Jr.
Susan Barrett and Jonathan Sweeney
Mr. and Mrs. Max L. Bloomquist
Howard Burdett
Seth M. Fisher
Dennis and Ardelle Hugdahl
Kirstin D. Hugdahl, OD
Mr. and Mrs. Marvin E. Robeck
Erika Robeck
Mark R. Shafer
Thrivent Financial for Lutherans
Carolyn Burlingham Windom
Elisabeth Smith Herald
James Herald
Penelope June Hillsman
Morgan Hillsman
Doris B. Holleb^T
Jane Benson and David Hartley
Herbert M. Hymen
Roger J. Hymen and Monika Cohen, MD
James and Rion
Katie Rutenbar
Barbara M. Louthan's Parents
Barbara Mankus Louthan
Milton Mausner and Lou Zemel
David Mausner and Gale Zemel
Hugo J. Melvoin^T
Mrs. Hugo J. Melvoin

Lenore B. Melzer
Mr. and Mrs. Howard A. Tyner
Mary Elizabeth Murphy
Anonymous
John Nordloh
Gregory and Gretchen Tieder
Meredith Wotman
Dorothy Anne Pensiero
Mr. and Mrs. Frank Pensiero
Lottie J. Peterson
David C. Peterson
Sheila T. Reynolds
Joan Langan-Maurer
Nancy H. Schwartz
Susan M. Walsh
Janet A. Rosenberg
Beth Loeb
Joseph Scarpaci
Jill Gerharz
Karl P. Schmidt
Stuart Turner
William T. Stanley, PhD^{ED}
Anonymous
Mark Alvey^E
Patience E. Baach^E
Mr. and Mrs. Mark D. Dawson
Cheryl and Michael Del Campo
Kristen and Josh Jacobs
Mr. and Mrs. Adam Kashuba
Charles L. Katzenmeyer^E
Mr. and Mrs.^T Dennis J. Keller
Mr.^T and Mrs. Jeffrey B. Keller
Melissa K. Lee
Nancy A. McDaniel
Patricia B. Miller
Mr. and Mrs. Robert P. Perkaus, Jr.
Jill Reynolds and Dan Spitzer
Mrs. Stephen W. Rothermel

Adrienne L. Szulczynski
Matthew J. von Konrat^E and Genea Pitts
Michael Wright

Virginia B. Thayer
Margaret K. Thayer^E

Daniel J. Vaughan
Hytham Almasri
Katherine Babjak
Timothy Hansen

Robert Wilson
Laura M. Bartolo and Ronald J. Corthell

Joseph T. Zich
Dennis and Marilyn Snider

Richard J. Zientek, Sr.
Camille J. Zientek and Richard J. Zientek

Collections Donations

Through generous gifts of objects and specimens, the Field Museum's collections have grown to become an indispensable scientific resource for scholars around the world. The Museum acknowledges the following donors who made gifts in 2017 to enhance the institution's collections.

ANTHROPOLOGICAL COLLECTIONS

William and Robin Booth
Donor
Dennis Gallagher
Donor
Rev. Charlotte Shivers
Donor
Marin (Mark) W. Denning
Donor
Mary S. Thieme
Donor
Jamie Lewis
Fieldwork Collector
Alaka Wali
Fieldwork Collector
Ian McCutcheon
Donor

BOTANICAL COLLECTIONS

Marcia Amaral
Auckland War Memorial Museum
Anna Balla
California Academy of Sciences

Eszterházy Károly College
Flora Richardson Foundation,
Indiana

W. C. Gaswick

J. Graham

P. Leacock

Harvard University

Hiroshima University, Japan

Instituto de Botânica,
São Paulo, Brazil

Jardim Botânico do
Rio de Janeiro, Brazil

Missouri Botanical Garden

Murray State University

Muséum National d'Histoire
Naturelle, Paris, France

National Museums of Kenya

National Museum of Nature and
Science, Japan

New York Botanical Garden

Oregon State University

Rancho Santa Ana Botanic
Garden, California

Smithsonian Institution

Doel Soejarto

Tbilisi State University, Georgia

University of Tsukuba, Japan

Universidad de Concepción,
Chile

Universidad Nacional Pedro
Ruiz Gallo, Peru

Universidad San Pablo-CEU,
Madrid, Spain

Universidade Estadual Paulista,
São Paulo, Brazil

University of California

University of Helsinki, Finland

University of Illinois

University of Kansas

University of South Carolina

University of Turku, Finland

L. Wallner

Matt von Konrat

GEOLOGICAL COLLECTIONS

Fossil Invertebrates

Dr. Daniel Blake

Jack Wittry

2017 FMNH Expedition
to Eocene Green River Fm
of Wyoming led by Dr. Lance
Grande

Tim Nelson

Dr. Charles & Susan Shabica /
Northeastern Illinois University's
Mazon Creek Project

Fossil Plants

2017 FMNH Expedition
to Eocene Green River Fm
of Wyoming led by Dr. Lance
Grande

Fossil Vertebrates

2016 FMNH Expedition to
Jurassic of Utah led by Dr. Peter
Makovicky; BLM permit

2016 FMNH Expedition to
Jurassic of Utah led by Dr. Peter
Makovicky; State of Utah permit

2017 FMNH Expedition to
Cretaceous of Missouri led
by Dr. Peter Makovicky;
private land

Jack Wittry

Dr. Thomas Guensburg

2017 FMNH Expedition
to Eocene Green River Fm
of Wyoming led by Dr. Lance
Grande

Mr. & Mrs. James E. Konecny

Physical Geology/Meteorites

Jennika Greer

Terry Boudreaux

LIBRARY COLLECTIONS

Dr. William T. Stanley

Edward J. Valauskas

Valdemar and Zdenka Schwarz

Dr. Bruce D. Patterson

Dr. Janet Voight

ZOOLOGICAL COLLECTIONS

Amphibians and Reptiles

Brookfield Zoo

Chris Broeckhoven

Jochen Gerber

Lois Graller

Joseph Milanovich

Estate of George Rabb

Mike Reed (Bay Beach Wildlife
Sanctuary)

Alan Resetar

Bryan L. Stuart

Shedd Aquarium

Willowbrook Wildlife Center

Birds

Bay Beach Wildlife Sanctuary

Chicago Bird Collision Monitors

Save Our American Raptors

Treasure Coast Wildlife Center

U.S. Geological Survey

Willowbrook Wildlife Center

Lori Adjeschek

Fran Alcantara

Alvaro Amat

Jen Anderson

Bob Andrini

Marie Angkuw

Patience Baach

Tim Balassie

Anna Balla

Sarah Bass

John Bates

Leslie Bayles

Susan Benning

Nancy Bigelow

Stephanie Bielke

Chris Bowman

Nancy Bradt

Dan Brinkmeier

Stephanie Brown

Tim Brtis

Peter Buol

Werner Buol

Meg Burns

Bonnie Bush

Elaine Carlson

Kevin Carroll

Pat Carson

Liz Challoner

Jan Chattler

George Chavez

Suzanne Checchia

Shivani Choudhary

Mary Clemense

Diane Cohen

Daryl Coldren

Sarah Coleman

Steve Constantelos

Andrew Cox

Linda Cox

Rita Crimmins

Kate Cronin

Kelly Cronin

Luke Dahlberg

Angela Daidone

Alissa Dalsing

Donnie Dann

Steve Deines

Mark DeSantis

Robyn Detterline

Benjamin Dimook

Larry Dirst

Joan Dittman

Mary Djurovic

Jennifer Dombeck

Ann Domek

Kelly Dougherty

Pamela Dowd

Cheryl Dudeck

John Dziadus

Glenna Eaves

Nancy Fagin

N. Farley

Marty Farrington

Pamela Feldman

Adam Ferguson

Margaret Fisher

Ryan Ford

Ursula Forhan

Bill Franz

P. Friend

Robert Frye

Glenn Gabanski

Shari Gallo

Kathleen Gillespie

Gerry Ginsburg

Thomas Gnoske

Susan Golland

Ingrid Gould

James Graham

Mark Grant

Ed Graskamp

Cindy Gray

Bruce Green

Kelly Green

Lindsey Gregori

Terri Griel

Suzanne Hackbarth

Shannon Hackett

Nate Hambel

Sandra Harms

Alyssa Harsha

Chris Hauser
Ben Heins
Mary Hennen
Andy Hershberger
Chris Hetrea
Maria Hlohowskyj
Scott Holingue
Daniel Hooper
Joanna Hosteny
Roderick Hough
Janice Humphrey
Tamima Itani
Deborah Jackson
Carla Jaffe
Kristin Jensen
Susan Jicha
David Johnson
Glen Johnson
Jessica Johnson
Mark Johnston
Chris Kadow
John Kaiser
Kelly Karki
Becky Kass
Joyce Keithley
John Kelly
S. Kendall
John Kennedy
Dennis Kingsley
Steven Klink
Ruth Knipmayer
Grace Koehler
Tom Koziol
Brian Kraskiewicz
Marcie Krause
Larry Krutulis
Ruth Kurczewski
Sarah Kurtis
Mary Lako
Beth Lange
Deborah Lasala
Minju Lee
Al Legzdins
Hans Lim
Jessica Lopez
Carol Lovekin
Gloria Lowther
Peter Lowther
Mary Loye

Carol Lundsmann
Peggy Macnamara
Bryn Maddox
Chris Madsen
Debbie Maher
Crystal Maier
Siddhesh Mukerji
Chelsea Maguire
Gail Marggraf
Ben Marks
Jennifer Marshall
June Matayoshi
Trish May
Lynne Mecum
Laura Mendoza
Julia Meredith
Jennifer Merrick
Kortney Mettle
Paul Miessler
Lorraine Miller
Patricia Miller
Shahrozod Mohammadian
Nancy Mores
Laura Muraoka
Madeleine Murphy
Robert North
Jeanette Okulinski
Noelle Neel
Katie O'Neill
June Paez
Roger Palmer
Cathy Patrick
Joy Peplinski
Dorothy Pesch
Therese Peskowitz
Caitlin Peters
John Phelps
Margarita Poromanska
Marina Post
Jeff Prendki
Annette Prince
Catherine Principe
Robert Prosis
Megan Pryce
Michael Quigley
Jennifer Raber
Teri Radke
Emmanuel Ramirez
Rawlins Riles

Brad Roback
Maggie Robertson
Gerri Rode
Bob Russ
Jill Russell
Katherine Sadlier
Ben Sanders
Rachel Santymire
Michael Scelfo
Alexandra Scharf
Tom Schlipmann
May Schlotzhauer
John Schmadake
Susan Schmidt
E. Schreiber
Leslie Shad
Barbara Shaw
Akiko Shinya
Jeff Skrentny
Alison Sloan
Jeff Smith
Natalie Smith
Paige Smith
Chava Sonnier
Georgiana Srachta
David Stagman
Sandra Stearns
Jim Steffen
Candace Steffens
John Stoddard
Kalman Strauss
Supriya
Charles Swagel
Sandy Swanson
Betty Sweetland
Barb Sydow
Ann Tanner
Linda Tartof
Robb Telfer
Jim Tibensky
Colleen Tiesch
Peter Tolzmann
Dianne Traut
Mike Trinchitella
Tom Trinley
Suzanne Turner
Sarah von Fremd
Victoria Velinski
Denise Verret

Elizabeth Vickory
Jude Vickory
Anita Victorin
Alec Victorsen
Mary Viereggs
Janet Voight
Jordan Voskuil
Kristin Wacker
Edward Warden
Sean Ware
Chris Warneke
Ronald Weber
Marcia Weflin
Stephanie Wellin
Mary Wiesen
Kyle Wikler
David Willard
Carrie Willingham
Margaret Wilson
Bob Wild
Ashley Woltman
Sue Woltman
David Wong
Ann Woodward
Nancy Zeglen
Elaine Zeiger
John Zeman
Mike Zerbe
Svetlana Zhexembeyeva
Isa Zielsingki
Sophie Zivovic

Fishes

John G. Shedd Aquarium
Arturo Angulo
Katherine Criswell
Ng Hee
Daniel Popok
Ryan Thoni
Douglas Weber
Wilfredo Matamoros
Diego Elias
Andrea Miehl
Thomas Anton
Kevin Swagel
Mark Sabaj

Insects

Mark Milne
Charles Haddad

Rod Rood
D.K. Whaley
L. Dersch
Paul Skelley
R. Forkner
R. Vedder
Shuhei Yamamoto
Paul Thomas
Al Newton

Invertebrates

Stephanie A. Clark
Eugene V. Coan
Joan Damerow
Emilio F. Garcia
Jochen Gerber
Andrew Gloss
Mike Grimm
David G. Herbert
Albert J. Lindar
Charlotte T. Lindar-Gorbunov
Constantine Mifsud
Timothy A. Rawlings
John G. Shedd Aquarium

Nguyen N. Thach
David A. Walker
Emily Young
Mammals
Ball State University
Brookfield Zoo
Bay Beach Wildlife Sanctuary
DuPage County Airport
Minnesota Department
of Natural Resources
Shedd Aquarium
Willowbrook Wildlife Center
Bernard Agwanda
Akpato Betin
Julian C. Kerbis
Steven M. Goodman
Larry R. Heaney
Tyrone Lavery
Link E. Olson
Noe de la Sancha
Lauren E. Smith

Charles M. Swagel
Kevin Swagel
Sadic Waswa
Paul W. Webala
Elzbieta Kolano
C. Yanny-Tillar
Marcy Krause
A. Caccavo
A. Prince
A. Caccavo
B. Bush
B. Shaw
D. Pesch
D. Stagman
J. Cajandig
L. Challoner
M. Loye
M. Lopez
N. Bigelow
S. Harms
V Cortis

If you feel an error has been made in presenting this donor honor roll, please contact the Office of Institutional Advancement at annualreport@fieldmuseum.org.

Photo Credits

Cover – Alvaro del Campo. Contents Page: Yaguas – Alvaro del Campo, Dinosaur – Pamela Gaible, Richard's Letter – John Weinstein. Science: Yaguas Fish – Alvaro del Campo, Snake – Alvaro del Campo, Girls on boat – Alvaro del Campo, Olivier – John Weinstein/GN91017_43d, Turtles book – Indiana University Press, Biodiversity of Mountains – Jian Huang, Archaeology and Globalization – John Weinstein/A115035d_019A, Dino Cousins – Museo Argentino de Ciencias Naturales, Corrie Moreau – John Weinstein/GN92024_083Bd, Rat – Velizar Simeonovski, Biodiversity Dashboards – mol.org, Ancient Agriculture – Ana Londono, Monarchs – Karen Bean/GN92037_237d, Climate Change Forum – Spoon Photo & Design, Bathtub – J.P. Brown, Mask/Alsdorf Hall – Kwakiutl mask – Kyle Flubacher, Field Museum, Butterfly – Field Museum, Collections Staff – Field Museum, Transcription Party – Shannon Lange, First Nations – Jamie Lewis, Raven Bowl – Jamie Lewis, Collections Photo – Field Museum, Collections Club – Caitlin Vaughn. Public Engagement: Sarcophagus – John Weinstein/A115251d_034A, Vase – John Weinstein/A115309d_020A, Ancient Cultures in Contact Exhibition Hall – John Weinstein/GN92449_007Bd, Peregrine – Peggy Macnamara, Jurassic World Dino – Imagine Exhibitions/NBC Universal, Beetles – Field Museum, Bushman – John Weinstein/Z94418_19d, Meteorites – John Weinstein/GN91195_11Ad, Bollywood – John Weinstein/GN92431_008d, March for Science Crowd – John Weinstein/GN92388_160d, March for Science Ladies – John Weinstein/GN92388_008d, Ancient Americas Speaker – John Weinstein/GN92381_269d, Pappan Family – John Weinstein/GN92381_069d, Day of Facts – Field Museum, Young Professionals Leadership Summit – Elizabeth Swain, In the Burbs – Google Maps, Flower – Karen Bean/GN91546_012d, Women in Science – Field Museum, Women in Science Speaker – Field Museum, Gala – Kyle Flubacker Photography, Grainger Science Hub – John Weinstein/GN92335_065Ad, Design Challenges – Field Museum, Field for All – Alyssa Harsha, curioCITY – Carolina Kaufman, The Back Room – Zachary James Johnston. Honor Roll: Evolve – Field Museum, Evolve Dancers – Field Museum, Conservation Celebration – John Weinstein/GN92389_155Ad, Giving Day – Field Museum, Field of Champions – Robert Carl, Members Night – Michelle Kuo, Gray Obbit – Robert Carl, Malott Obbit – Malott Family, Back Cover Frog – Alvaro del Campo

PUBLISHER

Charles L. Katzenmeyer

PROJECT MANAGER AND EDITOR

Franck Mercurio

ASSISTANT EDITOR

Chandler Garland

CONTRIBUTORS

Ken Angielczyk
Erica Au
Odette Barrientos
Aimee Davis
Trish Farrell
Gary Feinman
Gantz Center staff
Beth Gaus
Katie Golembieski
Andy Hershberger
Stephanie Hornbeck
Mary Jane Keitel
Keller Center staff
Tyrone Lavery
Corrie Moreau
Anne Morgan
Lisa Niziolek
Rick Ree
Olivier Rieppel
Matt Von Konrat
Ryan Williams
Mike Wren

DESIGNER

Bark Design, Chicago

PRINTER

The Fox Company,
Milwaukee, WI



The Field Museum gratefully acknowledges the generous support it receives from the Chicago Park District, on behalf of the people of Chicago.

© The Field Museum,
all rights reserved.



DIGITAL EDITION

fieldmuseum.org/annual-reports



Thank you, Connie!

In March 2018, Connie Keller concluded a three-year term as Chair of the Field Museum's Board of Trustees. Connie joined the Board in 2005 and also served as Vice Chair for Science Action. During her time as Board Chair, she oversaw tremendous growth. Connie led Trustees in the development and approval of a new Strategic Plan, helped launch the Museum's current campaign, and led three immersive Trustee expeditions to leading museums in New York, Los Angeles, and Washington D.C. Connie and Dennis Keller's philanthropy has helped the Museum reach a new level of influence in its research and conservation. Trustees and staff are deeply grateful to Connie for her always-positive outlook, exemplary philanthropy, and thoughtful leadership.

THANK YOU



Ancistrus kelleriae, a sucker-mouth armored catfish in the family Loricariidae. This species is endemic to the highlands of Guyana. Named in honor of Connie Keller and in gratitude of her leadership as Chair of the Board of Trustees for the Field Museum, where her unparalleled support of research and conservation work has led to the protection of more than 8 million hectares of South America forests and rivers.



THANK YOU!



1400 South Lake Shore Drive
Chicago, Illinois 60605
fieldmuseum.org

